

An application needs to be accurately completed and approved before solar systems are connected to Essential Energy's network.

Summary

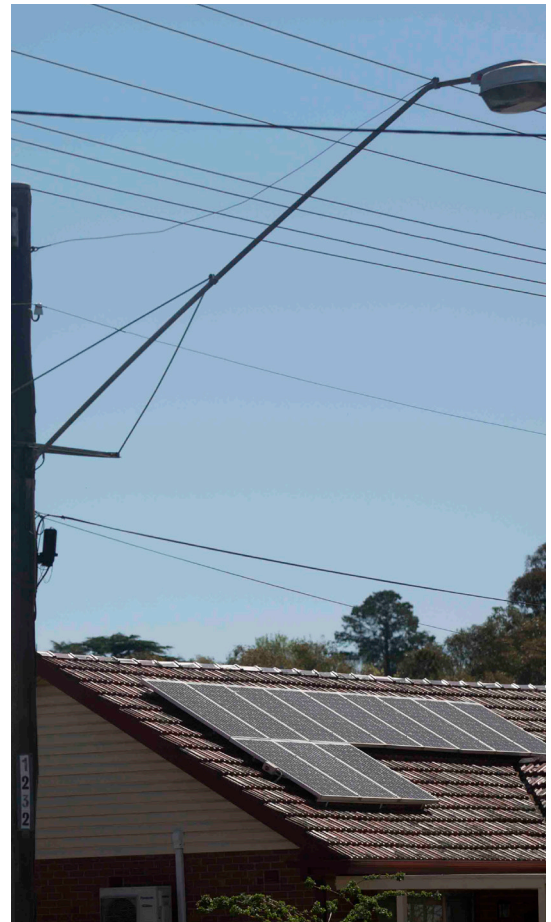
Following approval of the connection application Essential Energy will issue a connection offer. Connection offers include any site specific conditions and references to relevant standards.

It is critical that the system is installed in accordance with the connection offer. The installer must obtain a copy of the approved application for connection before installing and connecting the solar system.

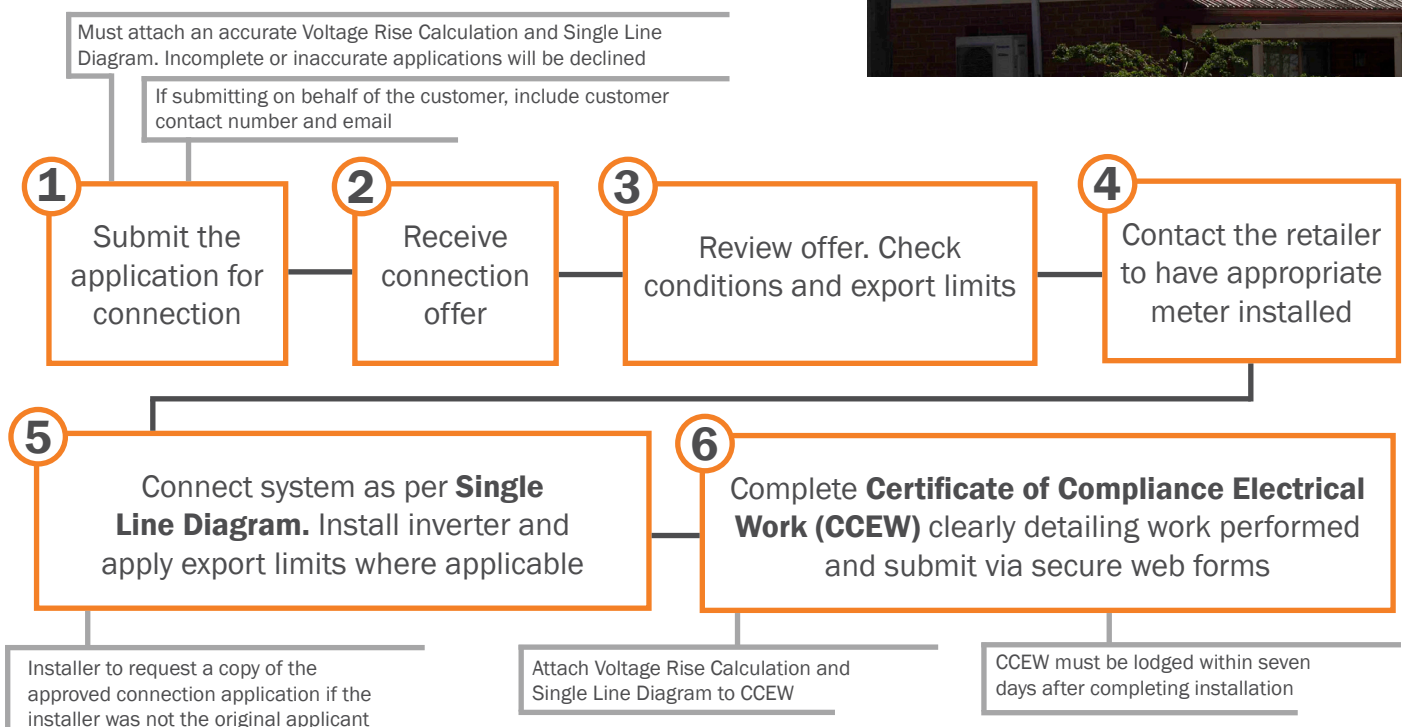
The system should be installed in accordance with the Voltage Rise Calculation and Single Line Diagram submitted with the application for connection. If you do not have these documents, you must request a copy from the connection applicant prior to connecting the installation.

It is the responsibility of the installer to ensure customer has an offer to connect and understands any conditions to the connection, including applicable export limits.

If the system cannot be installed according to the Single Line Diagram, a new connection application must be submitted with the revised Single Line Diagram and Voltage Rise Calculation for reassessment by Essential Energy.



What is the process for installers?



Frequently Asked Questions

What will happen if the installation is not installed in accordance with the connection offer?

Essential Energy monitors the network for compliance. If a noncompliant installation is identified, the system may be disconnected until the nonconformance is rectified.

Will my installation be inspected?

Essential Energy carries out routine audits on installations on a regular basis.

Does Essential Energy monitor power quality issues?

If power quality issues are identified that may be associated with solar installations, further investigation will be carried out.

Do I need to complete a Voltage Rise Calculation?

As per the NSW Service & Installation Rules any system >3kW Rural or >5kW Urban must have a compliant Voltage Rise Calculation attached. The Voltage Rise Calculation is to include all generating systems installed at the site and connected to the same connection point.

Why does Essential Energy export limit?

Export limits are informed by the Voltage Rise Calculations supplied by the installer. Export limits are essential to ensure a safe and reliable network is maintained.

Is the application process different if it is located within a multi occupant site, e.g. units, townhouse complexes, lifestyle villages, caravan parks?

In a multi occupant site there are quite often numerous solar systems connected to a private network. All systems supplied from the same connection point, are to be included in the Single Line Diagram and the Voltage Rise Calculation. Applications must indicate multiple National Meter Identifier's (NMI) on site.



Can I put solar on a separate premise to the metered premises?

Solar must be installed on the premises assigned to that NMI.

Can I find out the export limit before application?

To obtain export limits a complete application must be submitted.

I have been advised that a non-conformance was identified at a site where I was the solar installer not the applicant. Am I responsible?

It is the installers responsibility to install the system in accordance with the approved connection offer and any site specific conditions. If a non-conformance is found, details will be issued to the installer who submitted the CCEW, who is responsible for rectifying the non-conformance.

What will happen if an application is submitted with incorrect or incomplete information?

The application will be declined and additional information requested.

Who is responsible for compliance of an installation?

The installing contractor.