

# Bushfire Safety Kit

Bushfires and electricity:  
Plan. Prepare. Act. Survive.

2025-2026 Bushfire Season

## Table of Contents

<b>Introduction</b>	<b>3</b>
Safety comes first at Essential Energy	3
Essential Energy network footprint	3
Bushfire safety planning and the electricity network	4
<b>Plan</b>	<b>5</b>
Plan ahead for bushfire safety	5
Bushfire safety and the electricity network	6
Manage vegetation	7
Look up and live	7
<b>Prepare</b>	<b>8</b>
Prepare your property	8
Vegetation near powerlines	9
Prepare for potential loss of electricity	10
Know the Fire Danger Ratings	11
<b>Act</b>	<b>12</b>
On high risk days	12
During a bushfire	13
Fire safety near powerlines	13
Actions to reduce risk near the electricity network	14
Seek advice from Essential Energy	16
<b>Emergency Escape Procedure</b>	<b>17</b>
<b>Survive</b>	<b>18</b>
After a bushfire	18
Plan before you plant	19
Request Safety Advice	20
<b>Essential Energy Bushfire Management</b>	<b>21</b>
Bushfire Management at Essential Energy	21
<b>Emergency Numbers</b>	<b>23</b>
<b>Helpful Resources</b>	<b>24</b>



# Introduction

Safety first. At all times.



## Safety comes first at Essential Energy

Essential Energy builds, operates and maintains one of Australia's largest electricity distribution networks, providing a vital service to over 900,000 customers across regional, rural and remote communities.

Delivering safe and reliable electricity for our communities is at the core of what we do.

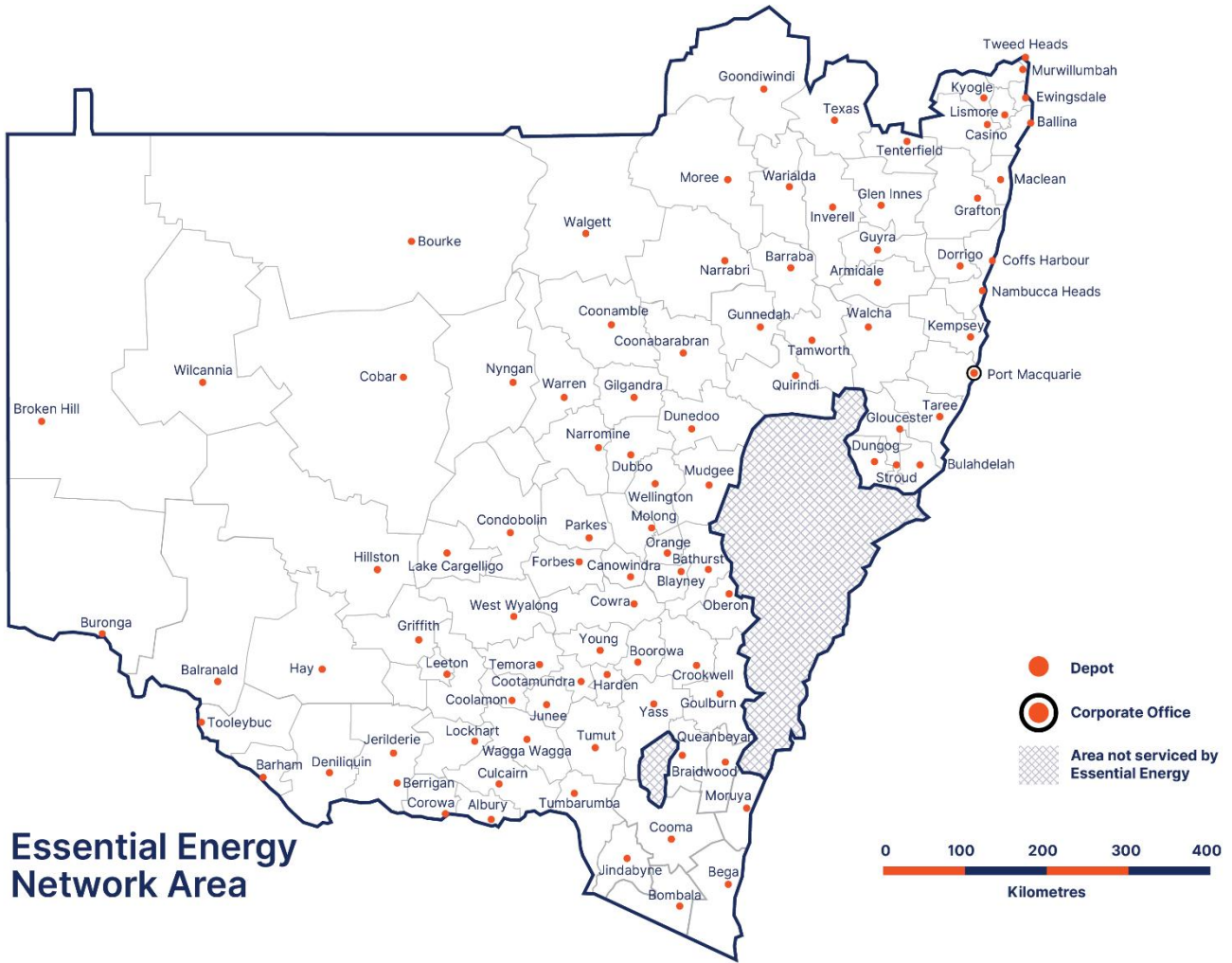
We have a responsibility to manage the safety of the electricity network, and in turn influence the safety of our community around that network.

We also seek to raise awareness in the communities in which we operate to understand the hazards associated with the electricity network and how our community can minimise risks to their safety.

## Essential Energy network footprint

Our network footprint covers 95 per cent of New South Wales and parts of southern Queensland, traversing 737,000 square kilometres of diverse landscape from the desert to the coast, across alpine to sub-tropical.

Essential Energy operates from close to 100 depots and offices throughout NSW.

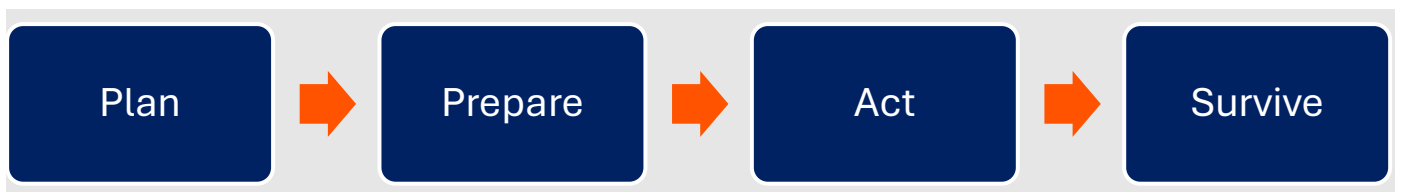


## Bushfire safety planning and the electricity network

Bushfires can have a significant impact on the electricity network. Fires can damage the network, interrupt your power supply and cause considerable damage to property – both public and private.

Knowing how to plan and prepare, and understand potential hazards to look out for, can help keep you and your family safe.

This Bushfire Safety Kit follows a four-stage process for understanding, planning and managing the risks associated with bushfires, particularly around the electricity network.



# Plan

Put plans in place, before it's too late.



## Plan ahead for bushfire safety

Bushfire is a part of life in New South Wales, and for that matter, the whole of the country. So, it's important we live 'bushfire ready'.

With coverage across a vast span of regional and rural NSW and parts of southern Queensland, Essential Energy understands the risks of living and working in bushfire-prone areas and the need to implement a range of ongoing activities to help prepare for bushfire season.

Throughout the year we plan ahead to reduce bushfire risk and ensure the safety and reliability of our electricity network.

We regularly inspect powerlines to maintain vegetation fire safety clearances and power supply reliability as part of our comprehensive infrastructure and vegetation management program.

While we do our part, it's also important that everyone in our community prepares for bushfire season, and has plans in place to minimise risks and maximise their safety.



## MAKE YOUR BUSHFIRE PLAN

Each year, the NSW Rural Fire Service's (RFS) hosts the Get Ready Weekend which typically occurs in September to mark the start of the annual bushfire season. It's a great time for residents and property owners to be aware of their bushfire risks and take steps to protect their homes and properties.

It's important to plan and document how you will manage in the event of a bushfire, including understanding the risks associated with impacts that bushfires can have on the electricity network.

Your Bushfire Plan should include identifying any potential hazards and risks around your property, and what you can do to eliminate or minimise these risks – to give yourself, your family and your home the best chance of survival. You should also ensure everyone in your household understands your plan.

The RFS has a range of helpful tools and resources to help you plan and prepare, and we recommend property owners complete:

- ▶ A [Bushfire Survival Plan](#): NSW Rural Fire Service provides a simple four step guide to help you discuss, prepare, know and keep a documented and current plan to help you manage your risks and actions in the event of a bushfire
- ▶ A [Farm Fire Plan](#): Download NSW Rural Fire Service's Farm Fire Plan template to take you through a step by step guide to preparing your property and developing an action plan. There's easy to use checklists to help you through the process.

## Bushfire safety and the electricity network

As part of your Bushfire Plan, we recommend you make yourself aware of the risks associated with the impact of bushfires on the electricity network, including considering what you would do if you have no power supply to your property.

When living or working near electricity such as powerlines, power poles and other electricity infrastructure that may be underground, it's important to be aware of the hazards, their impact on fire safety, and plan ahead.

### UNDERSTAND ENCROACHMENTS AND THE IMPACT ON FIRE SAFETY

A network encroachment is any structure or activity that intrudes, or has the potential to intrude, within safe clearance distances of our electricity network.

Our network includes but is not limited to, infrastructure such as powerlines (wires), power poles, stays, substations, underground powerlines, switching stations, padmount transformers, pillars and streetlights.

Encroachments can cause serious safety risks and limit access for our crews to complete important maintenance and repair work or to restore power following an outage.

These encroachment hazards can be heightened during fires, as there is a chance the electricity infrastructure could be damaged and cause greater fire risk to property.

Examples of encroachments include:

- ▶ A shed or liveable structure close to a pole or overhead wires.



- ▶ A structure or gardens close to a padmount substation.
- ▶ A farm dam built under the overhead powerlines and reducing ground clearances.
- ▶ Agricultural netting built under and around our poles.
- ▶ Vegetation and trees that are planted under or too close to powerlines or power poles.

## Manage vegetation

To ensure adequate safety, minimise hazards to the environment and reliability of your power supply, it's best to avoid planting trees near powerlines entirely. Trees growing, rubbing or falling onto powerlines is a major cause of power outages and can cause bushfires or safety issues.

While tree trimming and pruning are a significant part of Essential Energy's maintenance program, they are only a short-term solution. Essential Energy will remove trees when:

- ▶ It's necessary to protect powerlines to ensure safety of the community or surrounding property near the network.
- ▶ Alternatives, such as undergrounding or moving the powerline, are too costly or not practical.
- ▶ Acting in accordance with our Vegetation Management Plan.
- ▶ Qualified arborists have determined a tree is unhealthy and poses a heightened risk of falling into powerlines.
- ▶ Required trimming for safety will cause a tree to become unhealthy. In these cases, it is safer to remove the whole tree.
- ▶ Never attempt to carry out vegetation work near the electricity network. If you see vegetation growing too close to our network, please [report it via our online form](#).

## Look up and live

The [Look up and Live app](#) can help you identify and plan activities near powerlines. This tool may help raise awareness of the surrounding electricity network, avoid contact and reduce the risk of injury or death from electrocution and damage to equipment and our electricity network. It's a simple tool to assist you to safely plan and/or perform work around the electricity network by providing:

- Overhead powerline locations and imagery via an interactive geospatial map
- Powerline safety guidelines, including powerline exclusion zones
- Options for planning or performing work e.g. powerline visual indicators
- Information on de-energisation or relocation of powerlines
- Safety advice and high load forms
- Dial Before You Dig enquiry



# Prepare

Prepare your home. Prepare your property.



## Prepare your property

Once you've developed your [Bushfire Survival Plan](#) and/or [Farm Fire Plan](#), it's time to prepare – your family, home, and property.

Things to consider:

- ▶ Identify risks and hazards.
- ▶ Know the location of any electricity infrastructure on your property, such as power poles, powerlines or other electricity network assets.
- ▶ Identify potentially hazardous vegetation around your home, farm, and electricity infrastructure.
- ▶ Put plans in place in the event of a power outage.

## Vegetation near powerlines

Where you may have electricity infrastructure on your property, it's important to manage vegetation in the vicinity of powerlines or other electricity network assets to reduce the risk of power outages and potential bushfires caused by vegetation falling on or coming into contact with powerlines.

Regular and continuous vegetation management:

- ▶ Reduces the potential harm to people, damage to property or the local environment.
- ▶ Minimises tree-related power supply interruptions.
- ▶ Prevents potential bushfires by reducing the incidence of branches contacting powerlines.

### HOW DOES ESSENTIAL ENERGY DETERMINE WHICH TREES SHOULD BE TRIMMED?

As part of our comprehensive network maintenance program, powerlines are regularly inspected to assess risk levels and ensure minimum safety clearance zones between vegetation and powerlines.

Trimming further than the Minimum Vegetation Clearance Zone is also performed so vegetation regrowth will not encroach on this zone before trees are trimmed again.

The voltage of nearby powerlines, local bushfire classifications and a tree's age, species and general health are also taken into consideration.

If we identify that a tree on a property needs to be removed, qualified vegetation management specialists, from authorised contractors, will speak with the tree owner to explain why.

Sometimes it is necessary to turn the power off when trimming or removing trees to ensure everyone's safety.

### SEEK ADVICE FROM ESSENTIAL ENERGY

Please do not attempt to trim trees near powerlines as this is extremely dangerous and should only be undertaken by qualified personnel.

Essential Energy has programs in place to identify trees and other vegetation that could damage or interfere with the power supply or pose a bushfire or public safety risk.

We also encourage property owners or occupiers to alert us if they're concerned that vegetation is getting close to powerlines on their property by calling **13 23 91**.

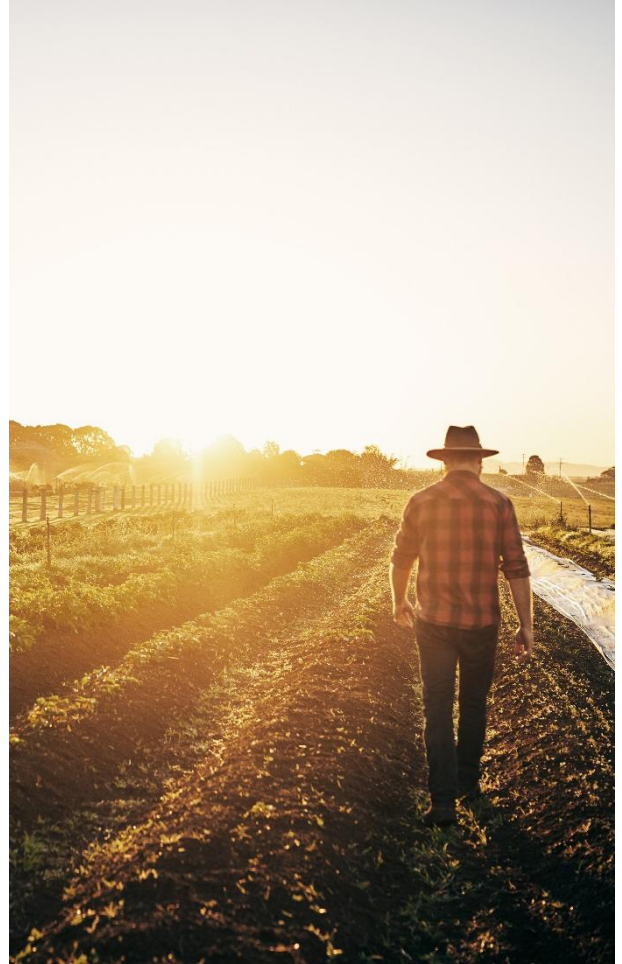
If you see vegetation growing too close to our network, please [report it via our online form](#).

- ▶ Never attempt to carry out vegetation work or any other activity on or near the electricity network yourself.
- ▶ Working near powerlines poses significant safety hazards, including the risk of serious injury or death, and must only be undertaken by qualified and authorised personnel.

## Prepare for potential loss of electricity

When preparing to implement your Bushfire Survival Plan, consider loss of access to the electricity grid – as power may be compromised during a bushfire, so it's important to prepare for the potential impacts.

- Know where your **Neighbourhood Safer Place** is and identify a suitable 'cool' place to retreat to minimise impacts and suffering from heat.
- Have enough drinking water available for all household members for 24 hours.
- Power may remain on at your location, but electricity supply to municipal water supply pumps may be impacted.
- Keep a battery powered AM/FM radio with fresh batteries for news and emergency broadcasts.
- Have a torch with fresh batteries readily available.
- Ensure petrol or diesel water pumps have been tested and reticulation is serviceable.
- Test the operation of pumps and water reticulation before you need them.
- Ensure that you know how to bypass or manually operate electric gates, electric locks and garage doors. Turn off the power and practice when the weather is cool.



### PORTABLE GENERATORS

Consider a portable petrol or diesel generator for critical loads such as refrigeration and medical devices you may be dependent on.

If the generator is wired into the house wiring, ensure that this work is done by a licensed electrician. Unlicensed electrical work poses a risk to your safety and our workers.

# Know the Fire Danger Ratings

Keep up to date with Fire Danger Ratings. Visit the [NSW Rural Fire Service](http://www.rfs.nsw.gov.au) website for the latest Ratings and Actions.

FIRE DANGER RATING	WHAT YOU SHOULD DO
<b>CATASTROPHIC</b>	<p><b>For your survival, leave bush fire risk areas.</b></p> <ul style="list-style-type: none"> <li>▶ These are the most dangerous conditions for a fire.</li> <li>▶ Your life may depend on the decisions you make, even before there is a fire.</li> <li>▶ Stay safe by going to a safer location early in the morning or the night before.</li> <li>▶ Homes cannot withstand fires in these conditions.</li> <li>▶ You may not be able to leave and help may not be available.</li> </ul>
<b>EXTREME</b>	<p><b>Take action now to protect your life and property.</b></p> <ul style="list-style-type: none"> <li>▶ There's a heightened risk. Be alert for fires in your area.</li> <li>▶ Decide what you will do if a fire starts.</li> <li>▶ If a fire starts, your life and property may be at risk. The safest option is to avoid bush fire risk areas.</li> </ul>
<b>HIGH</b>	<p><b>Be ready to act.</b></p> <ul style="list-style-type: none"> <li>▶ There's a heightened risk. Be alert for fires in your area.</li> <li>▶ Decide what you will do if a fire starts.</li> <li>▶ If a fire starts, your life and property may be at risk. The safest option is to avoid bush fire risk areas.</li> </ul>
<b>MODERATE</b>	<p><b>Plan and prepare.</b></p> <ul style="list-style-type: none"> <li>▶ Stay up to date and be ready to act if there is a fire.</li> </ul>
<b>NO RATING</b>	<ul style="list-style-type: none"> <li>▶ Fire danger ratings are used on days when you need to take action. On days of minimal risk, 'No Rating' will be issued.</li> </ul>

Source: NSW Rural Fire Service - [www.rfs.nsw.gov.au/plan-and-prepare/fire-danger-ratings](http://www.rfs.nsw.gov.au/plan-and-prepare/fire-danger-ratings). Current as at 27 August 2025. Check RFS website for latest updates.

# Act

Get ready. Act.



## On high risk days

Here are some things to do on high risk days:

- ▶ Familiarise yourself with your [Bushfire Survival Plan](#).
- ▶ Make sure you know who you are responsible for on your property. Check who is home, who may be working on the property, or any visitors who may be scheduled to arrive.
- ▶ Double check you know how to open your garage doors and gates manually if there is no power.
- ▶ Charge up any mobile phones or other important devices in advance in case you need to leave the premises in a hurry or if you lose power.
- ▶ Keep an eye on the [Fire Danger Ratings](#) and warnings on the [Rural Fire Service website](#).
- ▶ Be aware and stay clear of hazardous trees, powerlines or power poles which have the capacity to fall.
- ▶ Stay clear when powerlines are near – hot weather and windy conditions can cause powerlines to sag and sway and reduce visibility.

## During a bushfire

Always follow the advice from [NSW Rural Fire Service \(RFS\)](#) in the event of a bushfire.

Essential Energy maintains very close communication with local emergency services during bushfire events to maximise the safety of people in the community.

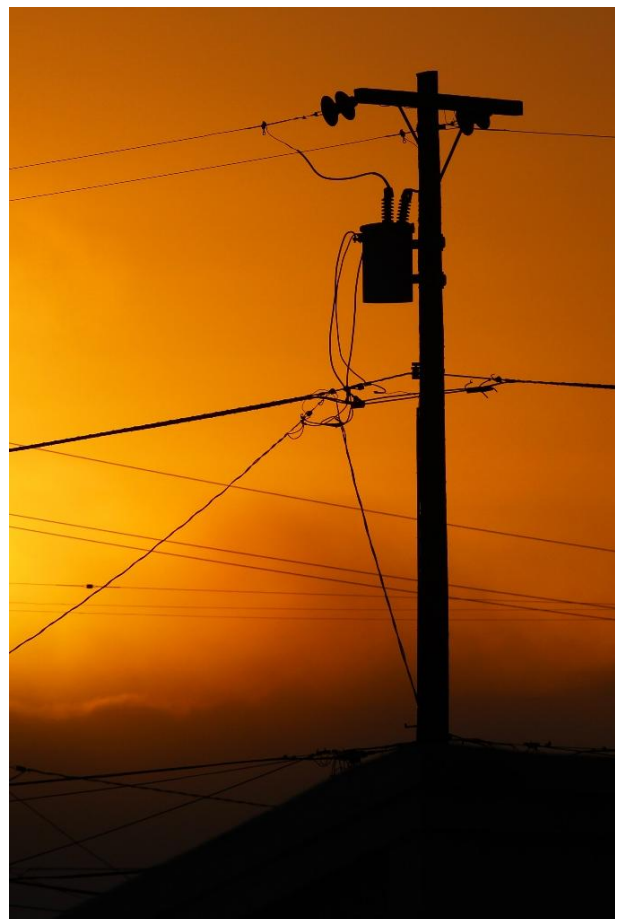
It may be necessary for us to turn the power off without notice to help keep everyone safe. In some areas, this may mean crucial services including phone and radio reception, water and sewerage services are also turned off.

That's why we encourage you to plan and prepare in advance what you would do if there was a loss of power to your property, and make sure you have easy access to your back up resources.

## Fire safety near powerlines

For your safety, when there is a fire close to a powerline, remember:

- Keep people, vehicles and high loads at least 25 metres from the powerline.
- Don't stockpile, windrow or heap combustible material under powerlines.
- Exercise caution if using powerline easements to access fire locations, as readymade firebreaks, as a break from which to commence back-burning operations, or as a refuge area in a firestorm.
- Smoke can act as a conductor – fires burning on or near powerline easements can greatly increase the chances of a flashover occurring.
- Electricity, especially at high voltages, can 'jump' across several metres of air gap. This means that direct contact with the high voltage powerline is not required to produce a potentially fatal event.
- Flashover may occur between powerlines or from powerlines to the ground or structures through burning vegetation (this may be seen as a flash or heard as an explosion)



### STAY AWAY FROM FALLEN OR SAGGING POWERLINES

In the event of a bushfire, property owners who decide to leave their property are advised to do so early to minimise the risk of encountering fallen or sagging powerlines across roads and other fire hazards.

Powerlines can sag lower in times of high demand, high temperature and fires which can reduce ground clearances

A bushfire and the weather that is causing the fire to spread can damage or destroy electricity infrastructure. This means there's a higher chance of coming across damaged powerlines or power poles, which in turn disrupts the power supply.

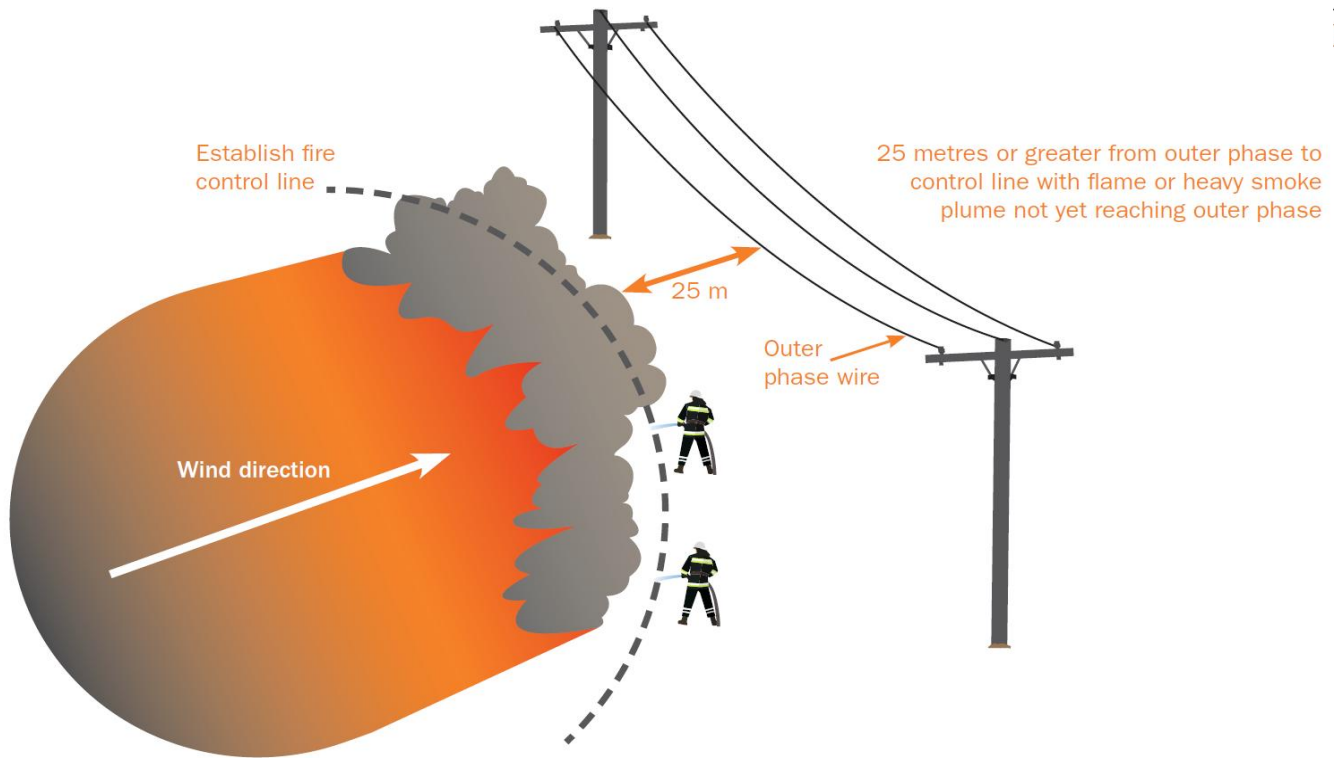
Remember to treat all fallen powerlines as live and keep at least eight metres away from any wires that appear to be damaged, sagging or have fallen to the ground, or any object they are in contact with including fences, water pipes and trees.

Always stay **at least 8 metres clear** of any fallen powerline or damaged power pole.

## Actions to reduce risk near the electricity network

- ▶ Avoid the ash of any burnt power poles which may contain hazardous substances.
- ▶ Do not directly attack fires in cleared areas beneath powerlines.
- ▶ Do not spray water directly on or near powerlines or insulators from the ground or air. If hosing your property down, make sure to never wet your electrical equipment, including meter boards and powerlines.
- ▶ Wait for fire to burn clear of the cleared areas beneath the powerlines before commencing a mop-up operation.
- ▶ Stay at least 8 metres away from damaged or fallen powerlines, and anything they may be touching. At all times treat the powerline as live until clearance has been given by Essential Energy personnel on site.
- ▶ At all times keep people and vehicles at a minimum of 25 metres clear of a head fire, or a flank fire burning under or within 25 metres of the powerlines.
- ▶ Keep an eye out for sagging or low hanging powerlines.

The below diagram illustrates the minimum clearance of 25 metres in a firefighting scenario.



### IMPORTANT INFORMATION

- ▶ Wherever possible, do not attempt to control fires near energised powerlines.
- ▶ Where fire control activities (hazard reduction) are considered necessary from the cleared area under powerlines, early advice to Essential Energy will allow an assessment of risks associated with de-energising the powerline.
- ▶ Approach no closer than 25 metres to the fire edge to conduct mop-up of grass fires. This may include the knockdown of low (less than 2 metres high) isolated flame/spots/smouldering logs which are not producing a convection column or heavy smoke plume.
- ▶ If required to carry out mop-up activities:
  - › never direct the hose stream onto the powerline.
  - › never direct the hose stream into a smoke plume that is near (less than 25 metres from) or reaching powerlines. Keep stream no higher than a person's head height.
  - › never direct the hose stream at a burning bush or tree (more than head height) in a powerline easement.
- ▶ Avoid the ash of any burnt power poles which may contain hazardous substances.
- ▶ Bushes or trees burning in powerline easement present a real threat of creating a flashover to earth from powerlines – keep at least 25 metres clear.
- ▶ Always remain at least 8 metres from any fallen powerlines and anything they may be touching and call Essential Energy on **13 20 80** to report the situation.
- ▶ If a powerline falls on your vehicle – **STAY. CALL. WAIT.** Stay in the vehicle if safe to do so, call **000** immediately and wait for emergency services to arrive.

- ▶ If you do need to exit the vehicle due to fire, or you are outside the vehicle when the powerline falls, you must follow the **Emergency Escape Procedure** - hop or shuffle with your feet together to a safe distance of at least 8 metres.

## Seek advice from Essential Energy

During a bushfire, wooden poles and structures may fail, causing powerlines to fall. Remember to never approach a vehicle to assist in an evacuation and always treat powerlines as if they are 'live', including anything they may be touching, such as fences, the ground or other items. Stay at least 8 metres away.

If you see fallen powerlines call us immediately on **13 20 80**.

If the situation is life threatening, call **Triple Zero (000)**.



# Emergency Escape Procedure

Do you know what to do if you are in a vehicle or machinery that comes into contact with the electricity network – such as a fallen powerline or power pole?

REMEMBER THREE IMPORTANT WORDS: **STAY. CALL. WAIT.**

- ▶ Stay in the vehicle, if safe to do so,
- ▶ Call 000 immediately, and
- ▶ Wait for emergency services to arrive.

If you must escape the vehicle, due to an immediate danger, then use the **Emergency Escape Procedure** as shown below. Once clear, do not return to the vehicle for any reason, and call Essential Energy immediately on **13 20 80**.

**1**  
Stay in the vehicle. Call 000 immediately.

**2**  
If there's an immediate danger, like fire, and evacuation is ABSOLUTELY necessary, assess your escape route & check for fallen powerlines.

**3**  
Exit the vehicle by jumping - make sure to land with **both feet together**.

**4**  
When jumping, **don't touch the vehicle & the ground at the same time.**

**5**  
Once you've landed with both feet together (be careful not to stumble or fall), shuffle with your feet together away from the vehicle.

**6**  
Move in this way until you are at least 8 metres away from the vehicle. **Do not go back**

# Survive

## After a bushfire.



### After a bushfire

In instances where a bushfire has occurred, we recommend you first check with NSW Rural Fire Service (RFS) that you can re-enter your property.

There are a few things you should do to keep yourself and your family safe when returning home.

#### BE AWARE OF ELECTRICAL HAZARDS

Essential Energy may have switched off power in your area during the bushfire, or the electricity network may have been damaged as a result of the bushfire, and caused an unplanned outage. Here are some things to consider:

- ▶ Check [Essential Energy's website](#) for updates on outages.
- ▶ Be aware and stay clear of hazard trees or power poles – which have the capacity to fall – particularly if they've suffered damage during the bushfire.

- ▶ Stay at least 8 metres clear of fallen powerlines at all times. Call Essential Energy on **13 20 80** to report fallen powerlines or damaged power poles, and **always** assume they are ‘live’.
- ▶ Avoid the ash or smoke of any burnt or burning power poles, as the affected sections may contain hazardous substances.
- ▶ Where a property has been damaged by fire, any electrical equipment should be inspected by a qualified electrician and repairs carried out before contacting Essential Energy to have the power restored. Visit the [Master Electricians Australia website](#) to help you locate a qualified electrician for your local area.
- ▶ Do not plug in or use any appliances that have been fire affected until they have been checked by a qualified electrician

## RESTORATION OF THE ELECTRICITY NETWORK

After a bushfire, Essential Energy will commence inspecting the areas impacted by bushfires and commence any restoration work as safety allows.

Before we commence work we patrol the line in question to ensure it is safe to start work and that the bushfire risk has passed.

This can mean that restoration work takes longer than anticipated – but it is important to ensure the safety of our employees and the community.

## SEEK ADVICE FROM ESSENTIAL ENERGY

During a bushfire, wooden poles and structures may fail, causing powerlines to fall. And, remember to never approach a vehicle to assist in an evacuation – always treat powerlines as if they are ‘live’, including anything they may be touching, such as fences, the ground or other items.

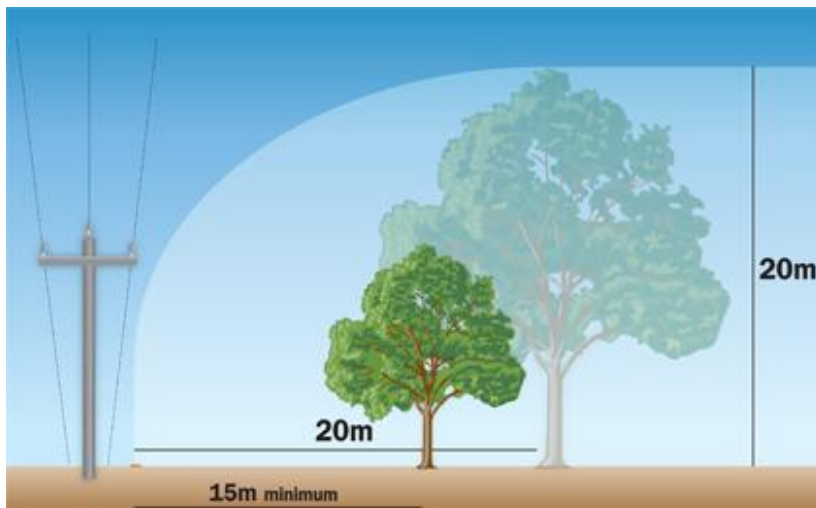
- ▶ For general information and advice, including vegetation management, call us on **13 23 91**.
- ▶ If you see fallen powerlines or damaged power poles, call us immediately on **13 20 80**.
- ▶ If a structure has been inundated by fire, call us on **13 20 80** before turning the power on.
- ▶ If the situation is life threatening, call **Triple Zero (000)**.

## Plan before you plant

After a bushfire, you may consider replanting or replacing trees on your property. The right trees in the right place provide shade, privacy, wildlife habitat and help prevent erosion. The wrong trees planted near powerlines can become a safety hazard to the local environment and property and may impact the reliability of your power supply.

The best idea is to avoid planting trees near powerlines entirely. Inappropriate species should not be planted directly under powerlines and sufficient distance must be allowed so they can grow to their full potential without becoming a safety concern.

To reduce or avoid the need for tree trimming and the potential for costly tree removals, we encourage landowners to plant responsibly – please plan before you plant.



Always plant trees at least **15 metres** away from powerlines or a distance equal to its mature height - whichever is greater.

## GUIDELINES FOR PLANTING

- ▶ Make sure any vegetation is kept well clear of powerlines.
- ▶ Look up before you plant:
  - › Download the Look up and Live app to check the location of any powerlines.
  - › Submit a Before You Dig enquiry to locate any underground electricity infrastructure.
- ▶ Consider how big the tree or vegetation will grow and what will be affected.
- ▶ Plant taller varieties furthest away from the powerlines using the planting guide above.
- ▶ Do not plant on streets without local council approval.
- ▶ Remember that access to powerlines is required for maintenance and repairs in the future.
- ▶ Avoid plant species that could invade the surrounding environment.
- ▶ Plant away from the underground pits, pillar boxes and padmount transformers so roots don't become a problem.
- ▶ Tall growing species including the trees showing in our Unsuitable Trees Guide are unsuitable under or near powerlines
- ▶ In some instances, a property owner may be responsible for the cost of managing tree trimming or removal of trees planted close to powerlines.

## Request Safety Advice

If you are working or operating equipment near powerlines or electricity network equipment, you will need to assess the risk of inadvertent contact with the electricity network.

Before you commence any work, you should submit a [Request for Safety Advice](#) and we will assess your request and provide safety services where required to ensure that working near the electricity network can be done safely.

## SUBSCRIBE TO OUR ESSENTIAL SAFETY NEWSLETTER

Register to receive safety information from Essential Energy and [subscribe to our quarterly Essential Safety Newsletter](#).

# Essential Energy Bushfire Management

How we prepare for bushfire season.



## Bushfire Management at Essential Energy

At Essential Energy, safety is our top priority.

We proactively plan year-round to minimise bushfire risks and maintain the safety and reliability of our network.

To address these risks, we implement a range of proactive measures to ensure we're prepared for the bushfire season.

### HOW WE MANAGE FOR BUSHFIRE

We've outlined on the following page an overview of the activities and measures we take annually to continually manage the ongoing issues and impacts that bushfires can have on our community.

## RESEARCH AND TRIALS

- ▶ Research hazard tree management.
- ▶ Assess electrical protection settings trials and review.
- ▶ Undertake ongoing monitoring of research, trials and innovation across the industry.
- ▶ Review research and findings from major fire inquiries and coronial inquiries.

## ENGAGEMENT

- ▶ Lead and participate in engagement forums with Community, Government, and other Utilities.
- ▶ Liaise with expert partners - Fire Agencies; Research organisations; Natural Hazards Research Australia (NHRA), Commonwealth Scientific and Industrial Research Organisation (CSIRO), and Universities.
- ▶ Consult with Customer Advisory Groups and People's Panel.
- ▶ Engage with Industry representations – Utility Arborist Association Australia (UAAA), Energy Networks Australia (ENA), Embedded Network Operators (ENOs), and Electricity Industry Safety Steering Committee (ISSC).
- ▶ Work with safety and economic regulators.

## MAINTENANCE AND RENEWAL

- ▶ Targeted resilience investments e.g. composite poles
- ▶ Significant investment in vegetation and contract management
- ▶ Management of maintenance tasks across 200,000km of network
- ▶ Identify and repair fire risk tasks prior to fire season
- ▶ Targeted capital works to renew ageing or deteriorated assets

## SAFETY REGULATION AND AUDIT

- ▶ Regulated Independent Bushfire Preparedness audits.
- ▶ Management of private lines.
- ▶ Annual Regulatory Safety Reporting.
- ▶ Internal audits.

## INSPECTION

- ▶ Undertaking routine groundline inspections.
- ▶ Completing pre-Summer aerial inspections of high fire risk lines.
- ▶ Deploying aerial inspections using technologies such as Light Detection and Ranging (LiDAR) and hi-resolution photography (fixed wing and drone).
- ▶ Performing specialised asset inspections - critical assets, underground equipment, substations, and transmission lines.

## RISK MANAGEMENT

- ▶ Climate change modelling.
- ▶ Development of a Bushfire Strategy and Plan.
- ▶ Development of Bushfire Risk Formal Safety Assessment.
- ▶ Bushfire Risk Network Modelling.
- ▶ Governance e.g. Bushfire Risk Assurance Panel.

## NETWORK OPERATIONS

- ▶ Emergency response and agency support.
- ▶ Fault and dispatch management.
- ▶ Network configuration for Total Fire Ban days.
- ▶ Monitoring of weather conditions and active fires.

## PLANNING AND DESIGN

- ▶ Review of protection settings for bushfire risk days.
- ▶ Poor performing feeder analysis.
- ▶ Defining construction standards to reduce bushfire risk.
- ▶ Building network resilience.
- ▶ Accredited Service Provider (ASP) management.



# Emergency Numbers



**Emergency**  
All life threatening emergencies

**Triple Zero**  
(000)

[triplezero.gov.au](http://triplezero.gov.au)



**NSW Fire & Rescue**  
All life threatening emergencies

**Triple Zero**  
(000)

[fire.nsw.gov.au](http://fire.nsw.gov.au)



**NSW Police**  
All life threatening emergencies

**Triple Zero**  
(000)

[police.nsw.gov.au](http://police.nsw.gov.au)



**NSW Ambulance**  
All life threatening emergencies

**Triple Zero**  
(000)

[triplezero.gov.au](http://triplezero.gov.au)



**NSW State Emergency Service**  
Floods & Storms

**13 25 00**

[ses.nsw.gov.au](http://ses.nsw.gov.au)



**NSW Rural Fire Service (RFS)**  
Bushfire information line

**1800 679 737**

[rfs.nsw.gov.au](http://rfs.nsw.gov.au)



**Essential Energy**  
Report damaged powerlines or power poles, or find out about power outages

**13 20 80**

[essentialenergy.com.au/  
outages](http://essentialenergy.com.au/outages)



# Helpful Resources



## Emergency Plus

Triple Zero (000) with GPS locator

Download from

[Apple App Store](#)

Download from

[Google Play Store](#)



## Hazards Near Me NSW

Emergency warnings and advice for fires, floods, tsunamis

Download from

[Apple App Store](#)

Download from

[Google Play Store](#)



## Look up and Live

Check the location of powerlines – an important tool to safely plan and/or perform work around the electricity network

Download from

[Apple App Store](#)

Download from

[Google Play Store](#)



## LiveTraffic NSW

Real time information about planned and unplanned incidents

Download from

[Apple App Store](#)

Download from

[Google Play Store](#)



## BOM Weather

Australian Bureau of Meteorology forecasts, radar and warnings

Download from

[Apple App Store](#)

Download from

[Google Play Store](#)



## Essential Energy

General Enquiries including Vegetation Management Enquiries

**13 23 91**

[essentialenergy.com.au](http://essentialenergy.com.au)



 [essential-energy](#)

 [EssentialEnergyAU](#)

 [essential\\_au](#)

 [essentialenergytv](#)

[essentialenergy.com.au](http://essentialenergy.com.au)