

# Be a Safety Star

Electricity safety activities for kids





Colour in  
these safety  
stars.



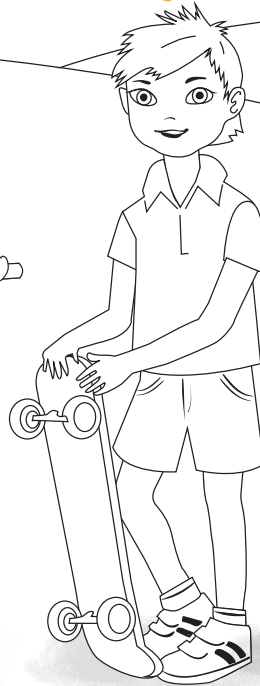
**Charlie**



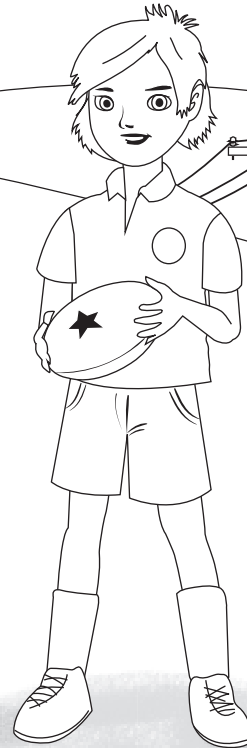
**Sophie**



**Li Mei**



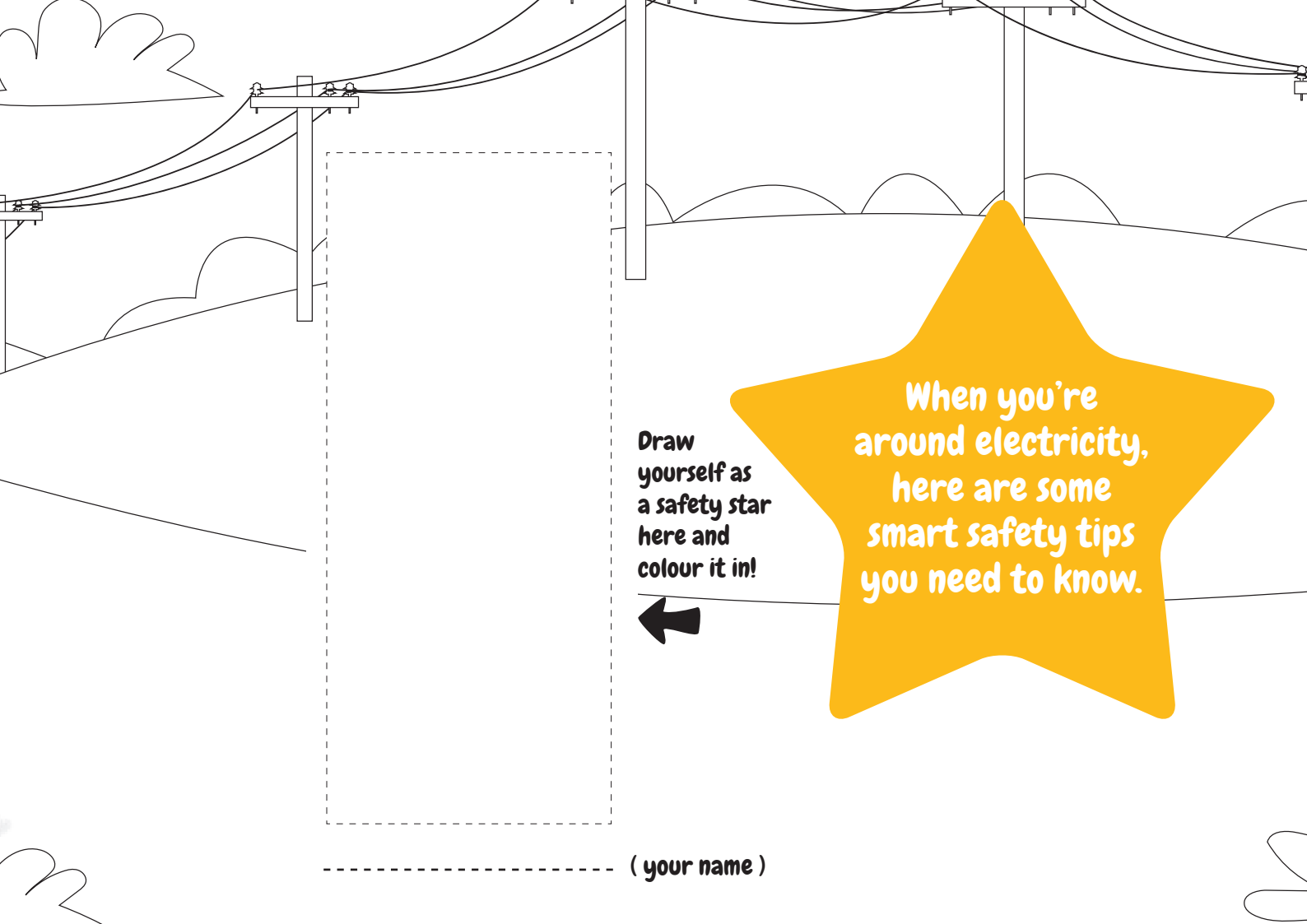
**Billy**



**Hem**



**Keira**



**When you're  
around electricity,  
here are some  
smart safety tips  
you need to know.**

**Draw  
yourself as  
a safety star  
here and  
colour it in!**

**( your name )**

Find the missing letter in the box below!



Pl\_y it safe! St\_y clear when \_\_\_\_\_lines  
are n\_\_r!

\_pot a f\_llen pow\_rline?

Keep at le\_st 8 m\_tr\_s away and tell an \_dult!

Don't be a str\_nger to \_lectrical \_anger.

Use a\_\_liances \_afely and c\_rrectly!

\_lectric\_l equi\_ment and \_nclosur\_\_ are no go zones,  
k\_\_p we\_\_ away!

Felt a z\_p from a tap or \_pp\_iance?

Kee\_ a\_ay and tell an a\_ult to rep\_rt it!

\_torms can be \_ang\_rous! \_lways s\_\_k \_helter and  
\_tay ind\_\_rs!

E a o e s p r s d w



**Play it safe! Stay clear  
when powerlines are near**

Why is this safety message so important to follow? .....

.....

.....

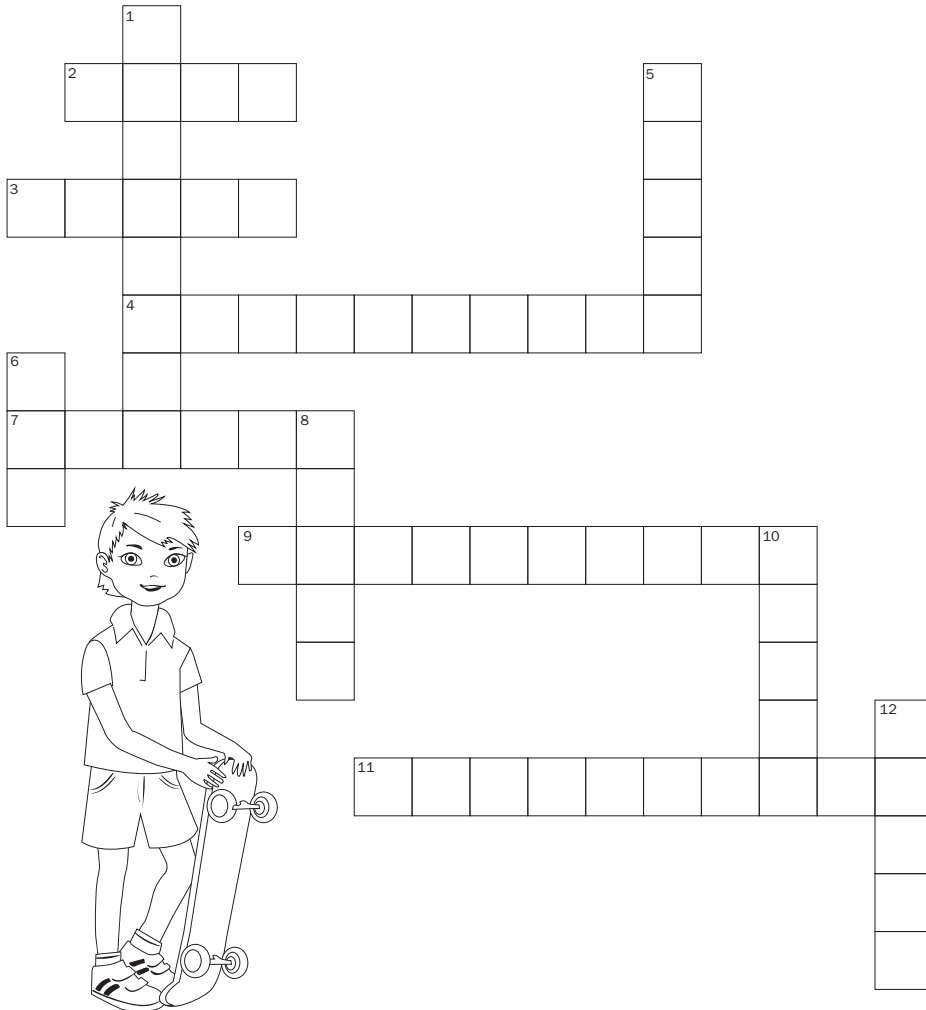
**Don't be a stranger to electrical danger!  
Use appliances safely and correctly**



**Why is this safety message so important to follow? .....**

.....

.....



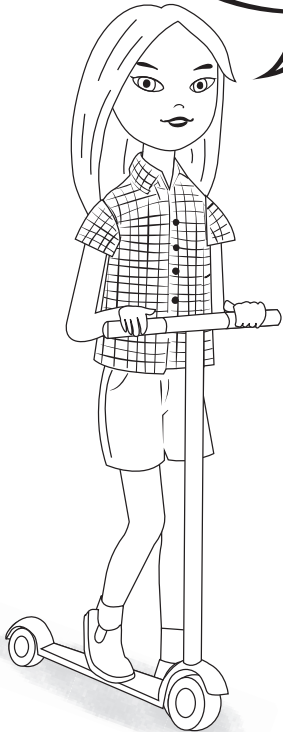
**Across:**

2. \_\_\_\_ before you dig (4)
3. Install \_\_\_\_ detectors. Test them regularly and change the battery on the 1st of April each year (5)
4. Switch off the power before plugging or unplugging \_\_\_\_\_ and hold the plug, not the cord (10)
7. You should stay at least 8 \_\_\_\_\_ away from fallen powerlines (6)
9. When flying your kite, stay away from \_\_\_\_\_ (10)
11. Call \_\_\_\_\_ in an emergency situation (6, 4)

**Down**

1. A unit of power equal to 1000 watts is a \_\_\_\_\_ (8)
5. \_\_\_\_\_ are used to show the energy efficiency of an electrical appliance (5)
6. A unit of electrical power is an \_\_\_\_ (3)
8. Every home should have a fully stocked \_\_\_\_\_ kit ready and stored for the summer storm season (5)
10. Install a \_\_\_\_\_ protector in your home to protect sensitive electronic equipment (5)
12. Renewable energy from the sun is \_\_\_\_\_ power (5)

Help me make  
the correct  
decisions



Use the Think Pair Share method to discuss the below.

1. Charlie and Billy are playing in the park and a storm approaches. The rain and wind cause a tree to fall on a nearby powerline. **What should they do?**

-----  
-----

2. Li Mei is at home making some toast for her family and the toast gets stuck in the toaster. **What should she do?**

-----  
-----

3. Keira walked into the bathroom and noticed her sister has left the hairdryer still plugged in on the vanity. The sink is also full of water.

**What should Keira do?** (tick all the correct answers)

- leave the bathroom and not worry
- turn off the hair dryer and pull out the plug
- empty the basin of water
- tell an adult
- use the hair dryer.

4. Hem is on holiday with his parents and they drive past a fallen powerline. How far away should Hem and his family stay from the powerline?

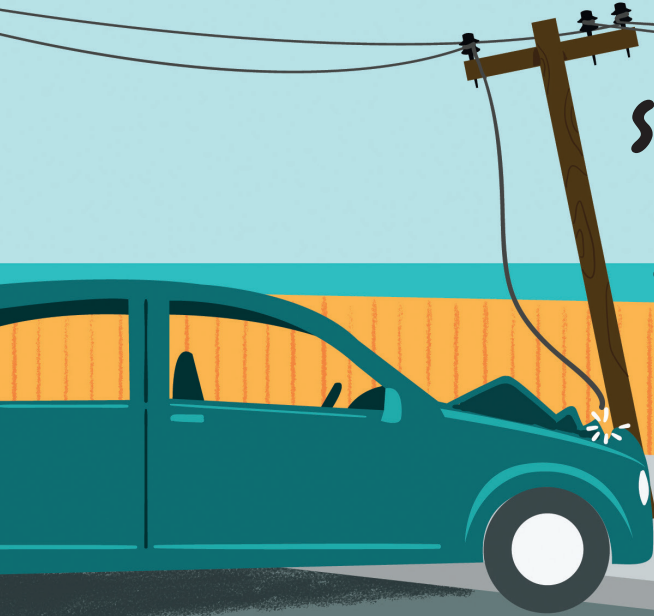
**What else should they do?**

-----  
-----





**Spot a fallen powerline?  
Keep at least 8 metres  
away and tell an adult**



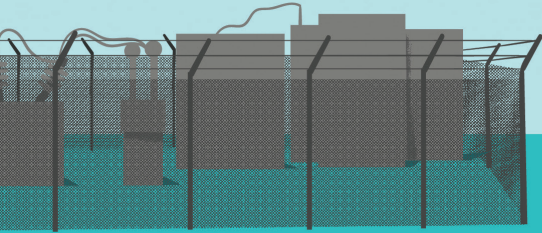
**Why is this safety message so important to follow?**.....

.....

.....

**Electrical equipment and enclosures are no-go zones, keep well away**

**4**



**Why is this safety message so important to follow?**.....

.....

.....

Find the words about electricity safety. They can go up and down, across and diagonally.

P E L E T R E A S A O S S O  
 E L E C T R I C M D S T A R  
 S C O W A T E R A U K A F E  
 T A A O P O W E R L I N E E  
 A L C L O T E R T T D T T L  
 S A P P L I A N C E S T Y E

POWERLINE  
 TREE  
 ADULT

SAFETY  
 STAR  
 KIDS

SMART  
 APPLIANCES  
 CALL

ELECTRIC  
 WATER  
 OOO

See how many safety messages you can create using the find-a-words, like:

Use your **electric** toothbrush responsibly!

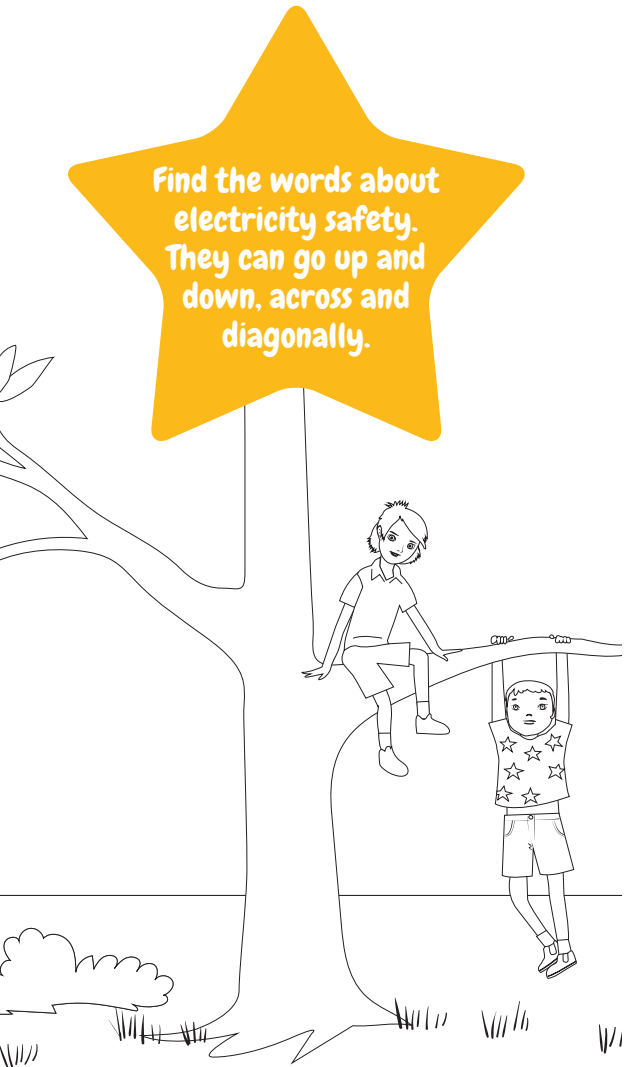
-----

-----

-----

-----

-----





Colour  
this in!

**Felt a zap from a tap or appliance?  
Keep away and tell  
an adult to report it**



**Why is this safety message so important to follow?**

-----

-----

-----

Storms can be dangerous!  
Always seek shelter and play indoors

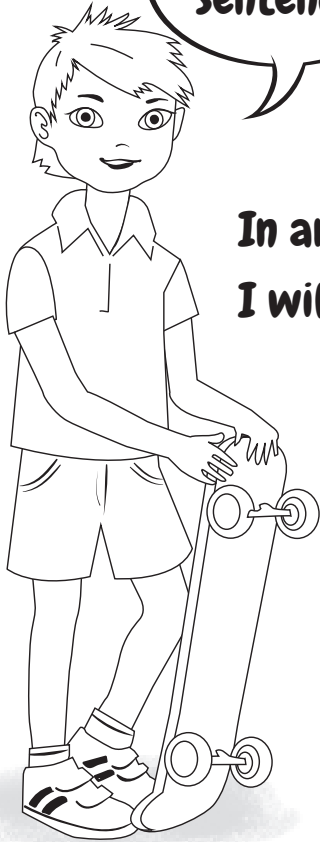


Why is this safety message so important to follow? .....

.....

.....

**Finish the sentence**



**In an emergency,  
I will call \_ \_ \_**

**What have I learnt?**

I will remember these rules to keep myself safe in an electrical emergency.

-----

-----

-----

-----



**REMEMBER!**  
Know what to do  
in an electrical  
emergency.

**HINT:**  
Ring 000  
for help.



[essentialenergy.com.au/education](https://essentialenergy.com.au/education)