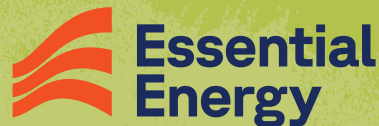


Be a Safety Star

Electricity safety activities for kids





Colour in
these safety
stars.

Charlie

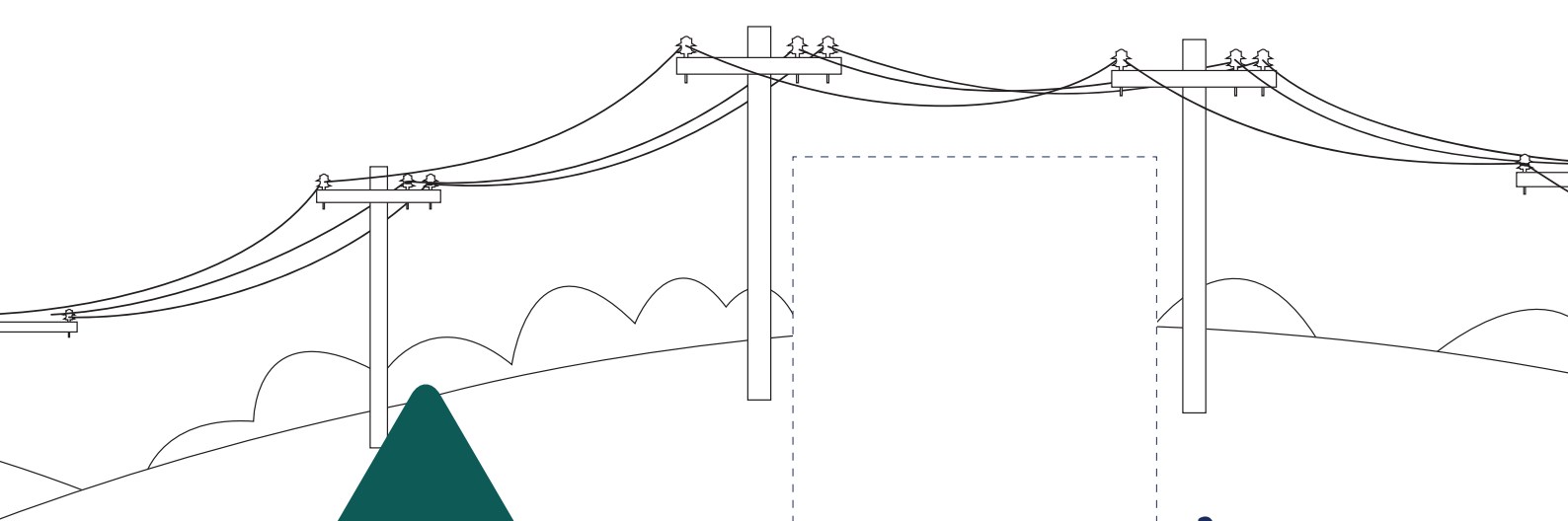
Sophie

Li Mei

Billy

Hem

Keira



**When you're
around electricity
here are some
smart safety tips
you need to know.**

**Draw
yourself as
a safety star
here and
colour it in!**



----- (your name)

Find the missing
letter in the
box below!



Pl_y it safe! St_y clear when _____ lines are n__r!

_pot a f_llen pow_rline?

Keep at le_st 8 m_tr_s away and tell an _dult!

Don't be a str_nger to _lectrical _anger.

Use a__liances _afely and c_rrectly!

_lectric_l equi_ment and _nclosur__ are no go zones,
k__p we__ away!

Felt a z_p from a tap or _pp_iance?
Kee_ a_ay and tell an a_ult to rep_rt it!

_torms can be _ang_rous! _lways s__k _helter
and _tay ind__rs!

S_lar en_rgy, w_nd, hydr_p_w_r and co__unity
b_tt_rie_ are gr__t for the _nvir_n_ent,
but are n_ g_ zon__ for y_u!

E a o m i S p r s d w l



Play it safe! Stay clear
when powerlines are near

Why is this safety message so important to follow?

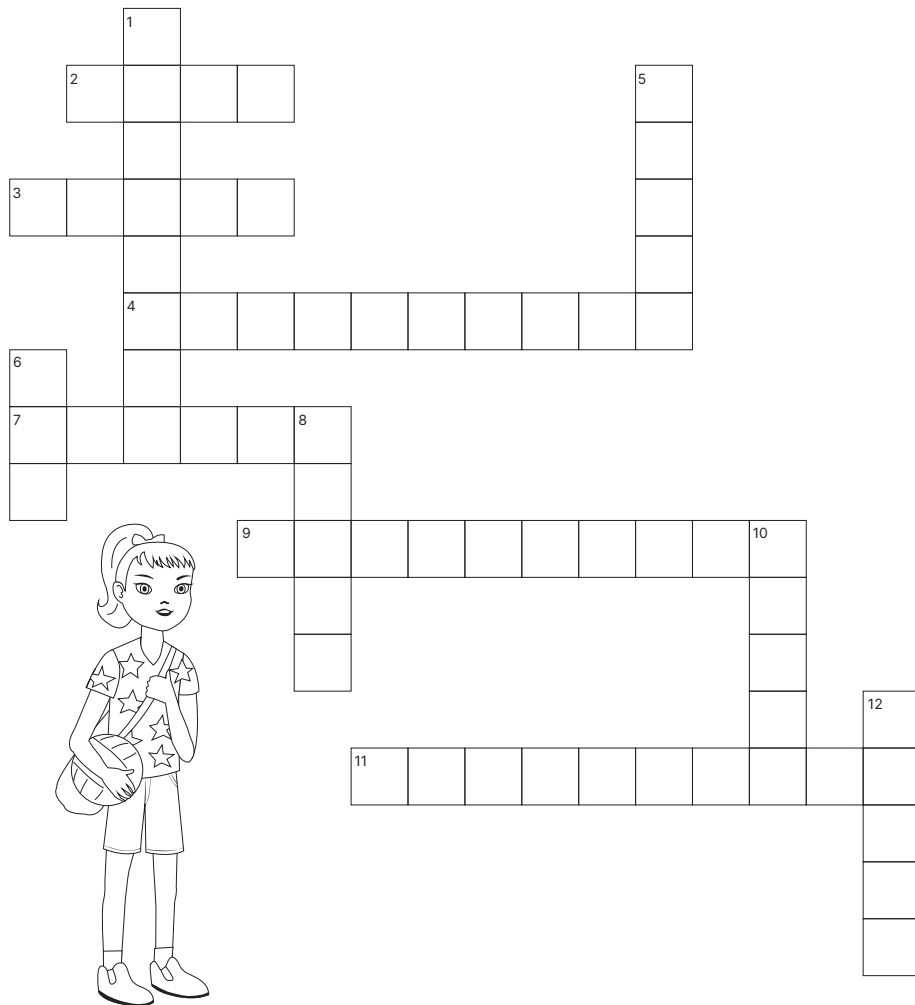
**Don't be a stranger to electrical danger!
Use appliances safely and correctly**



Why is this safety message so important to follow?

.....

.....



Across:

2. ____ before you dig **(4)**
3. Install ____ detectors. Test them regularly and change the battery on the 1st of April each year **(5)**
4. Switch off the power before plugging or unplugging ____ and hold the plug, not the cord **(10)**
7. You should stay at least 8 ____ away from fallen powerlines **(6)**
9. When flying your kite, stay away from ____ **(10)**
11. Call ____ in an emergency situation **(6, 4)**

Down

1. A unit of power equal to 1000 watts is a ____ **(8)**
5. ____ are used to show the energy efficiency of an electrical appliance **(5)**
6. A unit of electrical power is an ____ **(3)**
8. Every home should have a fully stocked ____ kit ready and stored for the summer storm season **(5)**
10. Install a ____ protector in your home to protect sensitive electronic equipment **(5)**
12. Renewable energy from the sun is ____ power **(5)**

Help me make
the correct
decisions

Use the Think Pair Share method to discuss the below.

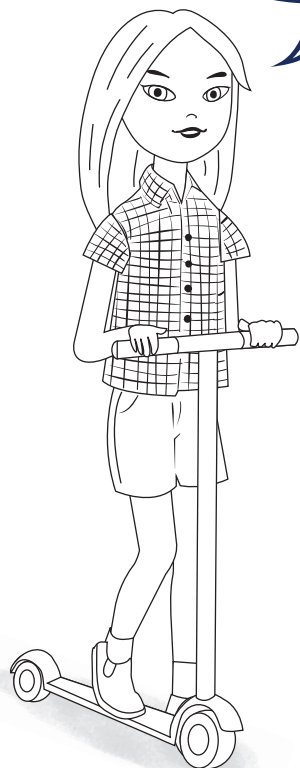
1. Charlie and Billy are playing in the park and a storm approaches. The rain and wind cause a tree to fall on a nearby powerline. **What should they do?**

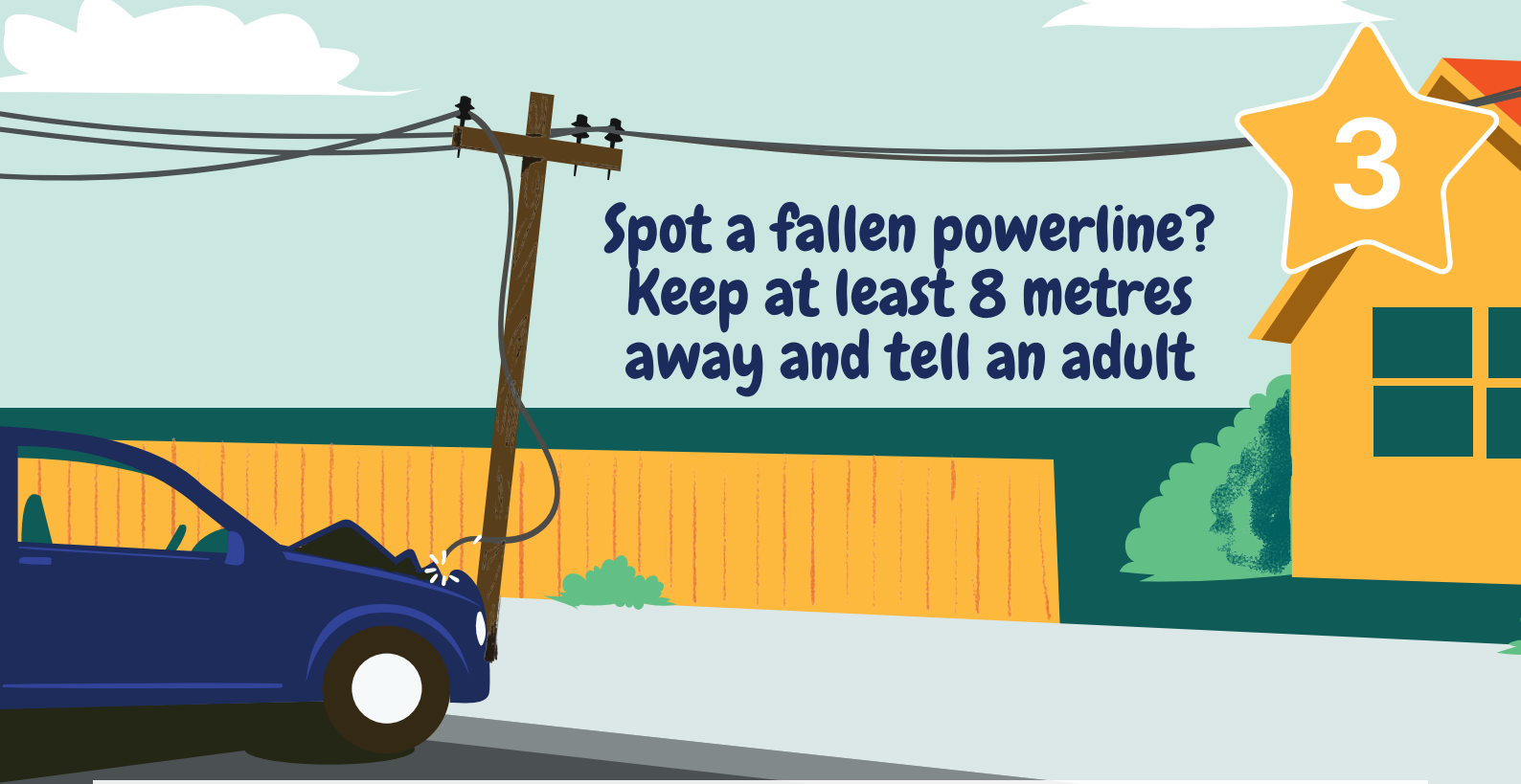
2. Li Mei is at home making some toast for her family and the toast gets stuck in the toaster. **What should she do?**

3. Keira walked into the bathroom and noticed her sister has left the hairdryer still plugged in on the vanity. The sink is also full of water. **What should Keira do?** (tick all the correct answers)

- ☐ leave the bathroom and not worry
- ☐ turn off the hair dryer and pull out the plug
- ☐ empty the basin of water
- ☐ tell an adult
- ☐ use the hair dryer.

4. Hem is on holiday with his parents and they drive past a fallen powerline. How far away should Hem and his family stay from the powerline? **What else should they do?**





**Spot a fallen powerline?
Keep at least 8 metres
away and tell an adult**

3

Why is this safety message so important to follow?

.....

.....



Electrical equipment
and enclosures are
no-go zones,
keep well away



Why is this safety message so important to follow?

.....

.....

Find the words about
electricity safety.
They can go up and
down, across and
diagonally.

P	E	L	E	T	R	E	A	S	A	O	S	S	O
E	L	E	C	T	R	I	C	M	D	S	T	A	R
S	C	O	W	A	T	E	R	A	U	K	A	F	E
T	A	A	O	P	O	W	E	R	L	I	N	E	E
A	L	C	L	O	T	E	R	T	T	D	T	T	L
S	A	P	P	L	I	A	N	C	E	S	T	Y	E

POWERLINE
TREE
ADULT

SAFETY
STAR
KIDS

SMART
APPLIANCES
CALL

ELECTRIC
WATER
OOO

See how many safety messages you can create using the find-a-words, like:

Use your electric toothbrush responsibly!

.....

.....

.....

.....

.....





Colour
this in!

**Felt a zap from a
tap or appliance?
Keep away and tell
an adult to report it**



Why is this safety message so important to follow?

Storms can be dangerous!
Always seek shelter and play indoors



Why is this safety message so important to follow?

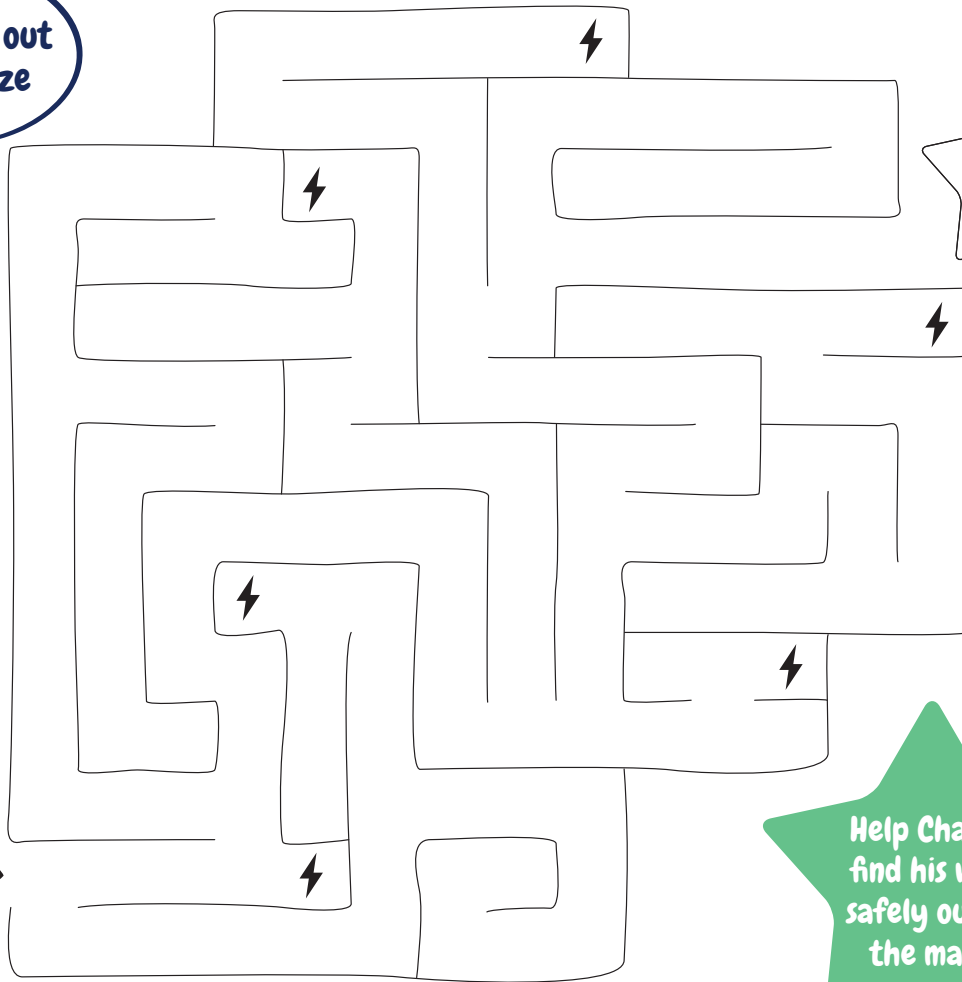


Solar energy, wind, hydropower
and community batteries are
great for the environment, but
are no go zones for you

Why is this safety message so important to follow?



Find a way out
of the maze

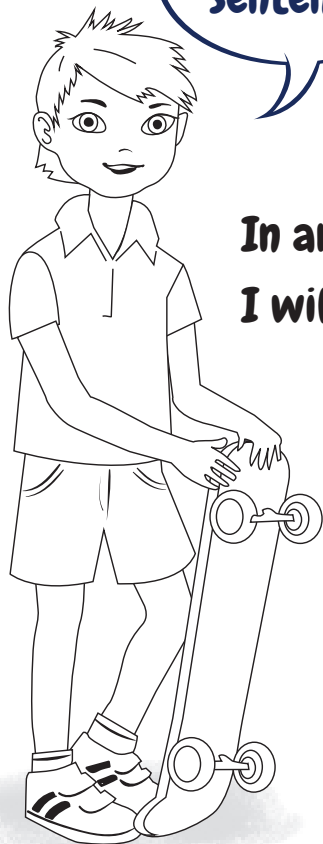


Finish

Start →

Help Charlie
find his way
safely out of
the maze

Finish the sentence



**In an emergency,
I will call _ _ _**

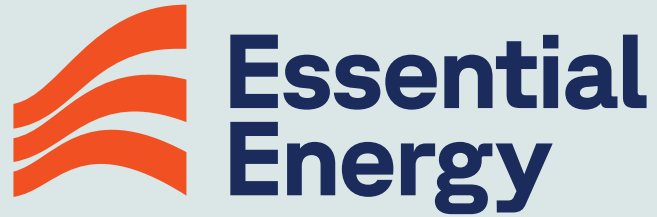
What have I learnt?

I will remember these rules to keep myself safe in an electrical emergency.



REMEMBER!
Know what to do
in an electrical
emergency.

HINT:
Ring 000
for help.



essentialenergy.com.au/education