

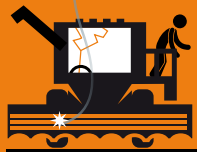
1

Stay in the harvester.
Call 000 immediately.



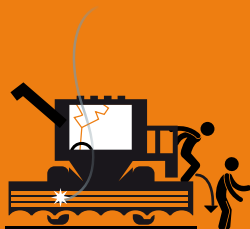
2

If there's an immediate danger, like fire, and evacuation is ABSOLUTELY necessary, assess your escape route and check for fallen powerlines.



3

Exit the harvester by jumping - make sure to land with **both feet together.**



4

When jumping, **don't touch the harvester and the ground at the same time.**



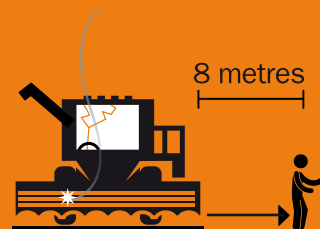
5

Once you've landed with both feet together (be careful not to stumble or fall), shuffle with your feet together away from the harvester.



6

Move in this way until you are at least 8 metres away from the harvester. **Do not go back.**



WHAT TO DO IF YOUR HARVESTER BRINGS DOWN POWERLINES

essential
energy