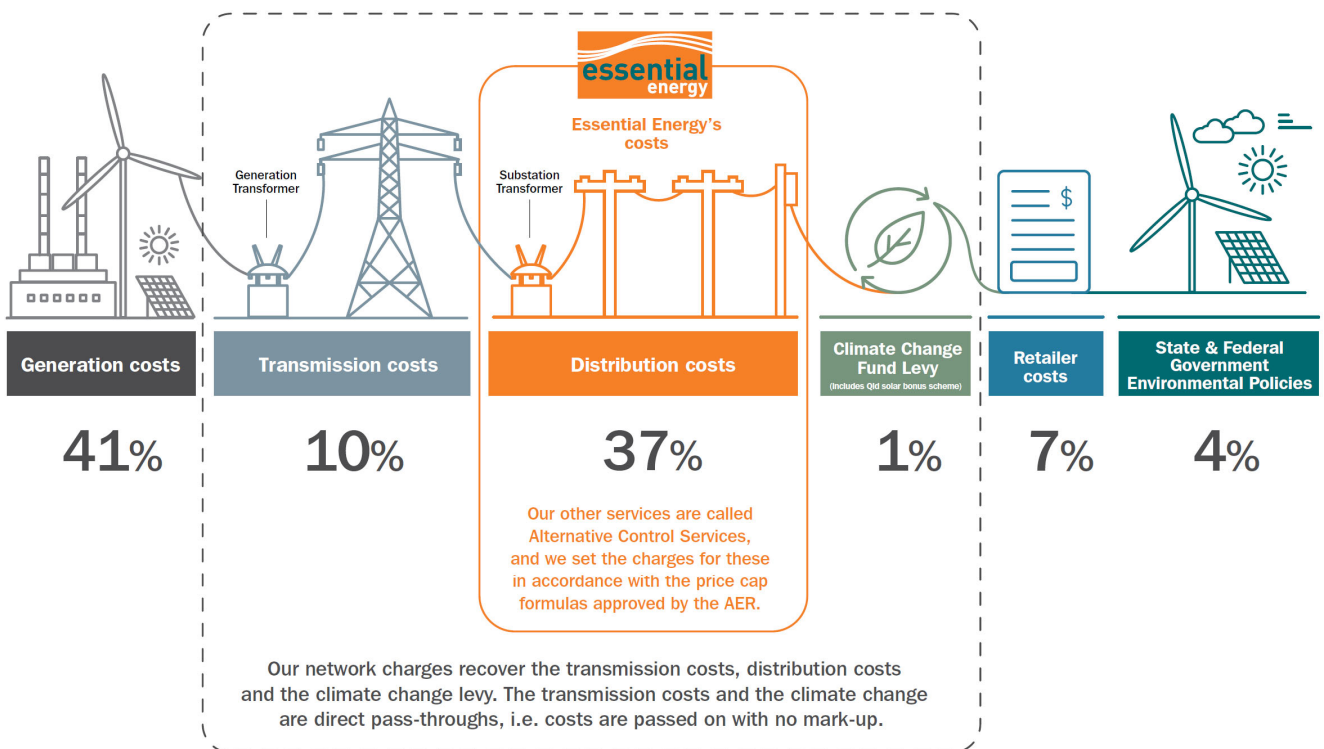


Indicative NUoS Pricing Schedule for 2019-24

Network Charges

Our charges include Essential Energy’s distribution costs as well as recovery of two additional components:

- > Distribution costs, which are Essential Energy’s cost to operate and maintain the distribution network and are the subject of this draft regulatory proposal.
- > Transmission costs, which are the responsibility of TransGrid and Powerlink to operate the transmission networks and are directly passed through to customers by Essential Energy and no additional mark-ups are applied.
- > Climate change fund levy and contributions to the Queensland Solar Bonus Scheme that are passed through to customers by Essential Energy and no additional mark-ups are applied.



Indicative Network Charge Levels

The indicative network charges presented in this Attachment are consistent with Essential Energy's Revised 2019-24 Tariff Structure Statement (TSS) and are modelled on the basis of Essential Energy's Revised 2019-24 Regulatory Proposal.

Factors that may cause network charges to vary from these indicative levels

There are a number of factors that are outside of Essential Energy's control that may affect the implementation of the network charges over the period covered by the TSS.

The actual charges that customers will pay in the next regulatory period will depend on:

- > The AER's final distribution determination for Essential Energy for the 2019-24 regulatory period
- > Any updates to energy consumption forecasts
- > The transmission costs passed through to Essential Energy
- > The jurisdictional schemes costs (such as the NSW Climate Change Fund and the QLD Solar Bonus Scheme) that are passed through to Essential Energy
- > Cost of debt placeholder rates (based on current market information) which are updated annually
- > The outcome of a number of incentive schemes (e.g. STPIS for reliability) that apply to Essential Energy
- > Any approved cost pass through applications
- > Application of CPI annually, the indicative prices listed below are in \$2019-20.

Prices are all exclusive of GST.

Please refer to Section 4 of Essential Energy's Revised 2019-24 TSS for the definitions of the charging parameters used in Essential Energy's network charges.

Indicative 2019/20 – Network Use of System (NUOS) charges

Tariff Code	Description	Status	NAC	Energy c/kWh				Demand \$/kVA/mth				Capacity \$/kVA/mth
			\$/year	Anytime	Peak	Shoulder	Off Peak	Anytime	Peak	Shoulder	Off Peak	Anytime
BLNN2AU	Residential Anytime	Default *	298.21	10.3496								
BLNT3AU	Residential ToU	Optional	298.21	-	13.3273	11.9597	4.3713					
BLNT3AL	Residential ToU_Interval meter	Default **	298.21	-	13.8332	11.5020	4.3713					
BLND1AR	Residential-Opt in Demand	Optional	298.21	-	4.0348	3.3214	2.0402		3.9476	-	-	
BLNC1AU	Energy Saver 1	Optional	32.78	2.1472	-	-	-					
BLNC2AU	Energy Saver 2	Optional	32.78	4.6460	-	-	-					
BLNN1AU	Small Business Anytime	Default *	298.21	14.2815	-	-	-					
BLNT2AU	ToU < 100MWh	Optional	2,067.22	-	14.1636	12.7531	6.3854					
BLNT2AL	Business ToU_Interval meter	Default **	520.63	-	14.6920	12.2751	6.1745					
BLNT1AO	ToU > 100 MWh/yr	Default	2,067.22	-	14.1636	12.7531	6.3854					
BLND1AB	Small Business-Opt in Demand	Optional	520.63	-	5.5161	4.3921	2.6187		6.4149	-	-	
BLNT1SU	ToU > 100 MWh/yr South	Obsolete	2,401.34		14.7108	12.6565	6.4279					
BLND3AO	LV ToU Demand 3 Rate	Default	5,428.59	-	4.0186	3.5620	2.3030		9.9185	8.9739	2.1699	
BLND3TO	LV ToU Demand-alternate tariff	Optional	5,428.59	-	12.6270	11.0452	4.6306		11.7727		-	
BLNDTRS	Transitional Demand	Specific	3,747.91	-	9.0911	8.1576	4.3442		4.9593	4.4869	1.0849	
BLNS1AO	LV ToU avg daily Demand	Obsolete	5,483.38		3.6756	3.2639	2.1812		10.8132	9.7834	2.5004	
BLND1CO	LV 1 Rate Demand Central	Obsolete	7,070.01		5.7113	5.0285	2.6925	16.0770				
BLND1SR	LV 1 Rate Demand Rural	Obsolete	5,483.38		11.9145	10.4148	4.2357	10.6781				3.8820
BLND1SU	LV 1 Rate Demand Urban	Obsolete	1,475.35		13.4421	11.7427	5.5950	10.4733				3.8869
BHND3AO	HV ToU mthly Demand	Default	6,719.73	-	3.0613	2.7346	2.2244		8.7449	7.9120	2.3676	
BHNS1AO	HV ToU avg daily Demand	Obsolete	6,531.37	-	3.0341	2.7304	2.2170		9.2600	8.3781	2.5070	
BHND1CO	HV 1 Rate Demand Central	Obsolete	9,072.02	-	6.2080	6.1164	2.8014	11.7200				
BHND1SO	HV 1 Rate Demand South	Obsolete	6,762.23	-	5.6297	5.5607	4.0687	8.4638				3.1171
BSSD3AO	Subtransmission 3 Rate Demand	Default	6,670.32	-	3.8439	2.3054	1.9151		3.3746	2.4058	0.9590	
BLNP1AO	LV Public Lighting NUOS	Default	298.21	15.4660	-	-	-					
BLNP3AO	LV Public Lighting ToU NUOS	Default	-	-	16.1844	14.1333	6.6668					

* These tariffs are the default for customers that do not have interval metering, and optional for other customers who meet the eligibility criteria

** These tariffs are the default for all new connections, meter upgrades and new technology installations and is optional for existing premises that have Interval capable meter

Indicative 2020/21 – Network Use of System (NUOS) charges

\$2019/20			NAC	Energy c/kWh				Demand \$/kVA/mth				Capacity \$/kVA/mth
Tariff Code	Description	Status	\$/year	Anytime	Peak	Shoulder	Off Peak	Anytime	Peak	Shoulder	Off Peak	Anytime
BLNN2AU	Residential Anytime	Default *	298.79	10.3669								
BLNT3AU	Residential ToU	Optional	298.79	-	13.6708	11.8340	4.4556					
BLNT3AL	Residential ToU_Interval meter	Default **	298.79	-	14.1793	11.3919	4.4556					
BLND1AR	Residential-Opt in Demand	Optional	298.79	-	4.3304	3.4916	2.1584		3.8902	-	-	
BLNC1AU	Energy Saver 1	Optional	32.30	2.2638	-	-	-					
BLNC2AU	Energy Saver 2	Optional	32.30	4.7603	-	-	-					
BLNN1AU	Small Business Anytime	Default *	303.21	14.2852	-	-	-					
BLNT2AU	ToU < 100MWh	Optional	1,860.50	-	14.5474	12.6514	6.4839					
BLNT2AL	Business ToU_Interval meter	Default **	517.98	-	15.0785	12.1897	6.2761					
BLNT1AO	ToU > 100 MWh/yr	Default	1,860.50	-	14.5474	12.6514	6.4839					
BLND1AB	Small Business-Opt in Demand	Optional	517.98	-	6.2295	4.8580	2.8686		6.2753	-	-	
BLNT1SU	ToU > 100 MWh/yr South	Obsolete	2,401.34		15.2624	12.6931	6.5878					
BLND3AO	LV ToU Demand 3 Rate	Default	5,349.56	-	4.3217	3.7471	2.4577		9.8460	8.9083	2.1383	
BLND3TO	LV ToU Demand-alternate tariff	Optional	5,349.56	-	12.9745	10.9739	4.7514		11.6013			-
BLNDTRS	Transitional Demand	Specific	4,186.54	-	7.7302	6.7152	3.7997		6.5640	5.9389	1.4255	
BLNS1AO	LV ToU avg daily Demand	Obsolete	5,483.38		3.9831	3.4643	2.3385		10.8132	9.7834	2.5004	
BLND1CO	LV 1 Rate Demand Central	Obsolete	7,070.01		6.1024	5.2376	2.8659	16.0770				
BLND1SR	LV 1 Rate Demand Rural	Obsolete	5,483.38		12.4825	10.5702	4.4123	10.6781				3.8820
BLND1SU	LV 1 Rate Demand Urban	Obsolete	1,475.35		14.0406	11.8716	5.7715	10.4733				3.8869
BHND3AO	HV ToU mthly Demand	Default	6,621.90	-	3.2930	2.8817	2.3674		8.6176	7.7968	2.3332	
BHNS1AO	HV ToU avg daily Demand	Obsolete	6,436.29	-	3.2548	2.8876	2.3601		9.1252	8.2562	2.4706	
BHND1CO	HV 1 Rate Demand Central	Obsolete	9,072.02	-	6.6098	6.4266	2.9717	11.7200				
BHND1SO	HV 1 Rate Demand South	Obsolete	6,762.23	-	6.0199	5.8820	4.2390	8.4638				3.1171
BSSD3AO	Subtransmission 3 Rate Demand	Default	6,573.21	-	4.0849	2.4481	2.0364		3.3255	2.3708	0.9451	
BLNP1AO	LV Public Lighting NUOS	Default	303.21	15.4519	-	-	-					
BLNP3AO	LV Public Lighting ToU NUOS	Default	-	-	16.5782	13.9834	6.7607					

* These tariffs are the default for customers that do not have interval metering, and optional for other customers who meet the eligibility criteria

** These tariffs are the default for all new connections, meter upgrades and new technology installations and is optional for existing premises that have Interval capable meter

Indicative 2021/22 – Network Use of System (NUOS) charges

\$2019/20			NAC	Energy c/kWh				Demand \$/kVA/mth				Capacity \$/kVA/mth
Tariff Code	Description	Status	\$/year	Anytime	Peak	Shoulder	Off Peak	Anytime	Peak	Shoulder	Off Peak	Anytime
BLNN2AU	Residential Anytime	Default *	299.12	10.2659								
BLNT3AU	Residential ToU	Optional	299.12	-	13.8157	11.5452	4.4370					
BLNT3AL	Residential ToU_Interval meter	Default **	299.12	-	14.3263	11.1187	4.4370					
BLND1AR	Residential-Opt in Demand	Optional	299.12	-	4.4351	3.4955	2.1752		3.8303	-	-	
BLNC1AU	Energy Saver 1	Optional	31.81	2.2790	-	-	-					
BLNC2AU	Energy Saver 2	Optional	31.81	4.7443	-	-	-					
BLNN1AU	Small Business Anytime	Default *	303.46	14.1571	-	-	-					
BLNT2AU	ToU < 100MWh	Optional	1,674.45	-	14.7208	12.3755	6.4673					
BLNT2AL	Business ToU_Interval meter	Default **	514.93	-	15.2542	11.9300	6.2628					
BLNT1AO	ToU > 100 MWh/yr	Default	1,674.45	-	14.7208	12.3755	6.4673					
BLND1AB	Small Business-Opt in Demand	Optional	514.93	-	6.8181	5.1940	3.0240		6.1310	-	-	
BLNT1SU	ToU > 100 MWh/yr South	Obsolete	2,401.34		15.6169	12.5556	6.6352					
BLND3AO	LV ToU Demand 3 Rate	Default	5,267.24	-	4.4435	3.7728	2.5024		9.6945	8.8395	2.1054	
BLND3TO	LV ToU Demand-alternate tariff	Optional	5,267.24	-	13.1335	10.7460	4.7608		11.4228			-
BLNDTRS	Transitional Demand	Specific	4,668.44	-	6.1564	5.2066	3.1632		8.0788	7.3663	1.7545	
BLNS1AO	LV ToU avg daily Demand	Obsolete	5,483.38		4.1100	3.5052	2.3858		10.8132	9.7834	2.5004	
BLND1CO	LV 1 Rate Demand Central	Obsolete	7,070.01		6.2754	5.2545	2.9134	16.0770				
BLND1SR	LV 1 Rate Demand Rural	Obsolete	5,483.38		12.7876	10.4944	4.4599	10.6781				3.8820
BLND1SU	LV 1 Rate Demand Urban	Obsolete	1,475.35		14.3769	11.7698	5.8191	10.4733				3.8869
BHND3AO	HV ToU mthly Demand	Default	6,520.00	-	3.3924	2.9121	2.4106		8.4849	7.6768	2.2973	
BHNS1AO	HV ToU avg daily Demand	Obsolete	6,337.24	-	3.3434	2.9274	2.4035		8.9848	8.1291	2.4325	
BHND1CO	HV 1 Rate Demand Central	Obsolete	9,072.02	-	6.7932	6.5183	3.0191	11.7200				
BHND1SO	HV 1 Rate Demand South	Obsolete	6,762.23	-	6.1915	5.9846	4.2864	8.4638				3.1171
BSSD3AO	Subtransmission 3 Rate Demand	Default	6,472.06	-	4.0963	2.4601	2.0484		3.2743	2.3343	0.9305	
BLNP1AO	LV Public Lighting NUOS	Default	303.46	15.3056	-	-	-					
BLNP3AO	LV Public Lighting ToU NUOS	Default	-	-	16.7604	13.6603	6.7396					

* These tariffs are the default for customers that do not have interval metering, and optional for other customers who meet the eligibility criteria

** These tariffs are the default for all new connections, meter upgrades and new technology installations and is optional for existing premises that have Interval capable meter

Indicative 2022/23 – Network Use of System (NUOS) charges

\$2019/20			NAC	Energy c/kWh				Demand \$/kVA/mth				Capacity \$/kVA/mth
Tariff Code	Description	Status	\$/year	Anytime	Peak	Shoulder	Off Peak	Anytime	Peak	Shoulder	Off Peak	Anytime
BLNN2AU	Residential Anytime	Default *	298.34	10.0979								
BLNT3AU	Residential ToU	Optional	298.34	-	13.8001	11.1950	4.3706					
BLNT3AL	Residential ToU_Interval meter	Default **	298.34	-	14.3111	10.7849	4.3706					
BLND1AR	Residential-Opt in Demand	Optional	298.34	-	4.4138	3.4563	2.1518		3.7575	-	-	
BLNC1AU	Energy Saver 1	Optional	31.20	2.2536	-	-	-					
BLNC2AU	Energy Saver 2	Optional	31.20	4.6799	-	-	-					
BLNN1AU	Small Business Anytime	Default *	302.60	13.8982	-	-	-					
BLNT2AU	ToU < 100MWh	Optional	1,507.01	-	14.6800	11.9851	6.3454					
BLNT2AL	Business ToU_Interval meter	Default **	510.04	-	15.2137	11.5569	6.1447					
BLNT1AO	ToU > 100 MWh/yr	Default	1,507.01	-	14.6800	11.9851	6.3454					
BLND1AB	Small Business-Opt in Demand	Optional	510.04	-	7.3237	5.4934	3.1094		6.0144	-	-	
BLNT1SU	ToU > 100 MWh/yr South	Obsolete	2,401.34		15.8009	12.3276	6.5911					
BLND3AO	LV ToU Demand 3 Rate	Default	5,167.08	-	4.3974	3.7036	2.4550		9.5102	8.7551	2.0653	
BLND3TO	LV ToU Demand-alternate tariff	Optional	5,167.08	-	13.0927	10.4074	4.6705		11.2056			-
BLNDTRS	Transitional Demand	Specific	5,167.08	-	4.3974	3.7036	2.4550		9.5102	8.7551	2.0653	
BLNS1AO	LV ToU avg daily Demand	Obsolete	5,483.38		4.0719	3.4527	2.3417		10.8132	9.7834	2.5004	
BLND1CO	LV 1 Rate Demand Central	Obsolete	7,070.01		6.2659	5.1771	2.8689	16.0770				
BLND1SR	LV 1 Rate Demand Rural	Obsolete	5,483.38		12.8902	10.3246	4.4152	10.6781				3.8820
BLND1SU	LV 1 Rate Demand Urban	Obsolete	1,475.35		14.5113	11.5745	5.7744	10.4733				3.8869
BHND3AO	HV ToU mthly Demand	Default	6,396.02	-	3.3478	2.8497	2.3620		8.3236	7.5309	2.2536	
BHNS1AO	HV ToU avg daily Demand	Obsolete	6,216.74	-	3.2883	2.8739	2.3549		8.8140	7.9745	2.3863	
BHND1CO	HV 1 Rate Demand Central	Obsolete	9,072.02	-	6.7940	6.4273	2.9746	11.7200				
BHND1SO	HV 1 Rate Demand South	Obsolete	6,762.23	-	6.1802	5.9043	4.2419	8.4638				3.1171
BSSD3AO	Subtransmission 3 Rate Demand	Default	6,348.99	-	4.0746	2.4431	2.0324		3.2121	2.2899	0.9128	
BLNP1AO	LV Public Lighting NUOS	Default	302.60	15.0246	-	-	-					
BLNP3AO	LV Public Lighting ToU NUOS	Default	-	-	16.7208	13.2198	6.6123					

* These tariffs are the default for customers that do not have interval metering, and optional for other customers who meet the eligibility criteria

** These tariffs are the default for all new connections, meter upgrades and new technology installations and is optional for existing premises that have Interval capable meter

Indicative 2023/24 – Network Use of System (NUOS) charges

\$2019/20			NAC	Energy c/kWh				Demand \$/kVA/mth				Capacity \$/kVA/mth
Tariff Code	Description	Status	\$/year	Anytime	Peak	Shoulder	Off Peak	Anytime	Peak	Shoulder	Off Peak	Anytime
BLNN2AU	Residential Anytime	Default *	297.92	9.9409								
BLNT3AU	Residential ToU	Optional	297.92	-	13.7960	10.8662	4.3073					
BLNT3AL	Residential ToU_Interval meter	Default **	297.92	-	14.3079	10.4715	4.3073					
BLND1AR	Residential-Opt in Demand	Optional	297.92	-	4.3928	3.4176	2.1280		3.6904	-	-	
BLNC1AU	Energy Saver 1	Optional	30.65	2.2280	-	-	-					
BLNC2AU	Energy Saver 2	Optional	30.65	4.6184	-	-	-					
BLNN1AU	Small Business Anytime	Default *	302.11	13.6546	-	-	-					
BLNT2AU	ToU < 100MWh	Optional	1,356.31	-	14.6504	11.6162	6.2279					
BLNT2AL	Business ToU_Interval meter	Default **	505.85	-	15.1850	11.2040	6.0309					
BLNT1AO	ToU > 100 MWh/yr	Default	1,356.31	-	14.6504	11.6162	6.2279					
BLND1AB	Small Business-Opt in Demand	Optional	505.85	-	7.9384	5.8603	3.2191		5.9071	-	-	
BLNT1SU	ToU > 100 MWh/yr South	Obsolete	2,401.34		15.9879	12.1016	6.5452					
BLND3AO	LV ToU Demand 3 Rate	Default	5,074.91	-	4.3505	3.6343	2.4063		9.3405	8.5989	2.0285	
BLND3TO	LV ToU Demand-alternate tariff	Optional	5,074.91	-	13.0615	10.0869	4.5823		11.0057			-
BLNDTRS	Transitional Demand	Specific	5,074.91	-	4.3505	3.6343	2.4063		9.3405	8.5989	2.0285	
BLNS1AO	LV ToU avg daily Demand	Obsolete	5,483.38		4.0324	3.3987	2.2960		10.8132	9.7834	2.5004	
BLND1CO	LV 1 Rate Demand Central	Obsolete	7,070.01		6.2554	5.0986	2.8226	16.0770				
BLND1SR	LV 1 Rate Demand Rural	Obsolete	5,483.38		12.9941	10.1556	4.3688	10.6781				3.8820
BLND1SU	LV 1 Rate Demand Urban	Obsolete	1,475.35		14.6476	11.3804	5.7281	10.4733				3.8869
BHND3AO	HV ToU mthly Demand	Default	6,281.92	-	3.3022	2.7869	2.3121		8.3386	7.2486	2.2134	
BHNS1AO	HV ToU avg daily Demand	Obsolete	6,105.84	-	3.2323	2.8195	2.3052		8.6567	7.8323	2.3437	
BHND1CO	HV 1 Rate Demand Central	Obsolete	9,072.02	-	6.7941	6.3355	2.9284	11.7200				
BHND1SO	HV 1 Rate Demand South	Obsolete	6,762.23	-	6.1680	5.8230	4.1958	8.4638				3.1171
BSSD3AO	Subtransmission 3 Rate Demand	Default	6,235.73	-	4.0528	2.4258	2.0161		3.1548	2.2490	0.8965	
BLNP1AO	LV Public Lighting NUOS	Default	302.11	14.7607	-	-	-					
BLNP3AO	LV Public Lighting ToU NUOS	Default	-	-	16.6949	12.8042	6.4899					

* These tariffs are the default for customers that do not have interval metering, and optional for other customers who meet the eligibility criteria

** These tariffs are the default for all new connections, meter upgrades and new technology installations and is optional for existing premises that have Interval capable meter

VERSIONS

Version 1 (V1)